

DATASHEET

FUNDC2 Rabbit Polyclonal Antibody

CAT. NO. APA18625

KEY FEATURES

Target	FUNDC2	Source / Host	Rabbit
Reactivity	Mouse	Clonality	Polyclonal
Applications	WB	Conjugation	Unconjugated
Form / Buffer	Liquid in 0.42% Potassium phosphate, 0.87% Sodium chloride, pH 7.3, 30% glycerol, and 0.01% sodium azide.		Storage at -20°C

BACKGROUND

Enables phosphatidylinositol-3,4,5-trisphosphate binding activity. Involved in intracellular triglyceride homeostasis. Located in mitochondrion.

APPLICATION

To ensure optimal assay performance, AREX recommends conducting reagent titration tailored to each testing system for optimal detection results.

WB	1:500 - 1:1000
----	----------------

*Results are sample-specific. Please refer to your local assay conditions and test parameters for reference.

PRODUCT OVERVIEW

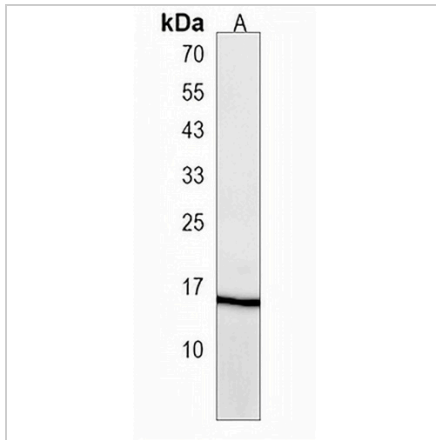
Description	Rabbit polyclonal antibody to FUNDC2
Specificity	Recognizes endogenous levels of FUNDC2 protein.
Antibody Type	Primary antibody
Immunogen	KLH-conjugated synthetic peptide encompassing a sequence within the C-terminal region of human FUNDC2. The exact sequence is proprietary.
Purification	The antibody was purified by immunogen affinity chromatography.
Molecular Weight	Predicted: 20 kD; Observed: 15 kD
Form/Buffer	Liquid in 0.42% Potassium phosphate, 0.87% Sodium chloride, pH 7.3, 30% glycerol, and 0.01% sodium azide.
Alternative Names	HCBP6; FUN14 domain-containing protein 2; Cervical cancer proto-oncogene 3 protein; HCC-3; Hepatitis C virus core-binding protein 6
Gene Symbol	FUNDC2
Entrez Gene	67391(Mouse)
SwissProt	Q9D6K8(Mouse)

*AREX continuously optimizes our products. Webpage content may not reflect the latest updates. For inquiries, please contact info@arexbio.com or your local distributor.

*Clone Number, Reactivity, Source/Host and Clonality can be found in the product name and Key Features section above.

DATASHEET**FUNDC2 Rabbit Polyclonal Antibody**

CAT. NO. APA18625

DATA

Western blot analysis of FUNDC2 expression in PC3 (A) whole cell lysates. (Predicted band size: 20 kD; Observed band size: 15 kD)

STORAGE

Store at 4°C short term. For long term storage, store at -20°C, avoiding freeze/thaw cycles.

NOTE

For Research Use Only. Not for diagnostic, therapeutics, prophylactic or in vivo use.