

**DATASHEET**

**IPP2 Rabbit Polyclonal Antibody**

CAT. NO. APA18629

**KEY FEATURES**

|               |                                                                                                           |               |                     |
|---------------|-----------------------------------------------------------------------------------------------------------|---------------|---------------------|
| Target        | IPP2                                                                                                      | Source / Host | Rabbit              |
| Reactivity    | Human                                                                                                     | Clonality     | Polyclonal          |
| Applications  | WB                                                                                                        | Conjugation   | Unconjugated        |
| Form / Buffer | Liquid in 0.42% Potassium phosphate, 0.87% Sodium chloride, pH 7.3, 30% glycerol, and 0.01% sodium azide. |               | Storage<br>at -20°C |

**BACKGROUND**

Inhibitor of protein-phosphatase 1.

**APPLICATION**

To ensure optimal assay performance, AREX recommends conducting reagent titration tailored to each testing system for optimal detection results.

|    |                |
|----|----------------|
| WB | 1:500 - 1:1000 |
|----|----------------|

\*Results are sample-specific. Please refer to your local assay conditions and test parameters for reference.

**PRODUCT OVERVIEW**

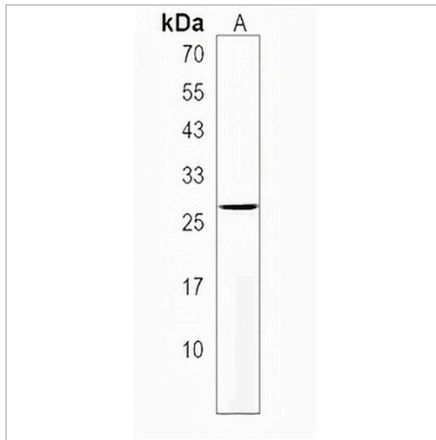
|                   |                                                                                                                                      |
|-------------------|--------------------------------------------------------------------------------------------------------------------------------------|
| Description       | Rabbit polyclonal antibody to IPP2                                                                                                   |
| Specificity       | Recognizes endogenous levels of IPP2 protein.                                                                                        |
| Antibody Type     | Primary antibody                                                                                                                     |
| Immunogen         | KLH-conjugated synthetic peptide encompassing a sequence within the Central region of human IPP2. The exact sequence is proprietary. |
| Purification      | The antibody was purified by immunogen affinity chromatography.                                                                      |
| Molecular Weight  | Predicted: 23 kD; Observed: 28 kD                                                                                                    |
| Form/Buffer       | Liquid in 0.42% Potassium phosphate, 0.87% Sodium chloride, pH 7.3, 30% glycerol, and 0.01% sodium azide.                            |
| Alternative Names | IPP2; Protein phosphatase inhibitor 2; IPP-2                                                                                         |
| Gene Symbol       | PPP1R2                                                                                                                               |
| Entrez Gene       | 5504(Human)                                                                                                                          |
| SwissProt         | P41236(Human)                                                                                                                        |

\*AREX continuously optimizes our products. Webpage content may not reflect the latest updates. For inquiries, please contact [info@arexbio.com](mailto:info@arexbio.com) or your local distributor.

\*Clone Number, Reactivity, Source/Host and Clonality can be found in the product name and Key Features section above.

**DATASHEET****IPP2 Rabbit Polyclonal Antibody**

CAT. NO. APA18629

**DATA**

Western blot analysis of IPP2 expression in NCIH460 (A) whole cell lysates. (Predicted band size: 23 kD; Observed band size: 28 kD)

**STORAGE**

Store at 4°C short term. For long term storage, store at -20°C, avoiding freeze/thaw cycles.

**NOTE**

For Research Use Only. Not for diagnostic, therapeutics, prophylactic or in vivo use.