

DATASHEET

MCM9 Rabbit Polyclonal Antibody

CAT. NO. APA18639

KEY FEATURES

Target	MCM9	Source / Host	Rabbit
Reactivity	Human	Clonality	Polyclonal
Applications	WB	Conjugation	Unconjugated
Form / Buffer	Liquid in 0.42% Potassium phosphate, 0.87% Sodium chloride, pH 7.3, 30% glycerol, and 0.01% sodium azide.		Storage at -20°C

BACKGROUND

Component of the MCM8-MCM9 complex, which is involved in the repair of double-stranded DNA breaks (DBSs) and DNA interstrand cross-links (ICLs) by homologous recombination (HR) and DNA interstrand cross-links (ICLs) by homologous recombination (HR). The MCM8-MCM9 complex is a 3'-5' DNA helicase and single-stranded (ss)DNA-stimulated ATPase which binds ssDNA in the presence of nucleoside triphosphates. Required for DNA resection by the MRE11-RAD50-NBN/NBS1 (MRN) complex by recruiting the MRN complex to the repair site and by promoting the complex nuclease activity. Indirectly regulates the recruitment of downstream effector RAD51 to DNA damage sites including DBSs and ICLs, probably by regulating the localization of the MNR complex.

APPLICATION

To ensure optimal assay performance, AREX recommends conducting reagent titration tailored to each testing system for optimal detection results.

WB	1:500 - 1:1000
----	----------------

*Results are sample-specific. Please refer to your local assay conditions and test parameters for reference.

PRODUCT OVERVIEW

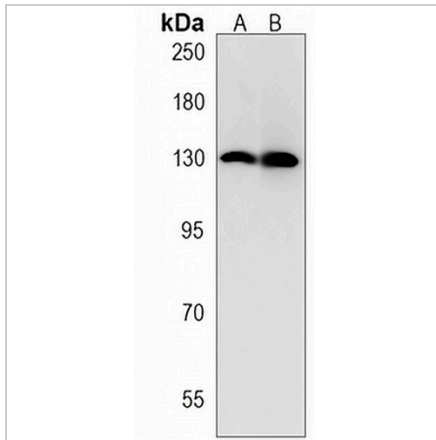
Description	Rabbit polyclonal antibody to MCM9
Specificity	Recognizes endogenous levels of MCM9 protein.
Antibody Type	Primary antibody
Immunogen	KLH-conjugated synthetic peptide encompassing a sequence within the C-terminal region of human MCM9. The exact sequence is proprietary.
Purification	The antibody was purified by immunogen affinity chromatography.
Molecular Weight	Predicted: 127 kD; Observed: 132 kD
Form/Buffer	Liquid in 0.42% Potassium phosphate, 0.87% Sodium chloride, pH 7.3, 30% glycerol, and 0.01% sodium azide.
Alternative Names	C6orf61; MCMDC1; DNA helicase MCM9; hMCM9; Mini-chromosome maintenance deficient domain-containing protein 1; Minichromosome maintenance 9
Gene Symbol	MCM9
Entrez Gene	254394(Human)
SwissProt	Q9NXL9(Human)

*AREX continuously optimizes our products. Webpage content may not reflect the latest updates. For inquiries, please contact info@arexbio.com or your local distributor.

*Clone Number, Reactivity, Source/Host and Clonality can be found in the product name and Key Features section above.

DATASHEET**MCM9 Rabbit Polyclonal Antibody**

CAT. NO. APA18639

DATA

Western blot analysis of MCM9 expression in 293 (A), K562 (B) whole cell lysates. (Predicted band size: 127 kD; Observed band size: 132 kD)

STORAGE

Store at 4°C short term. For long term storage, store at -20°C, avoiding freeze/thaw cycles.

NOTE

For Research Use Only. Not for diagnostic, therapeutics, prophylactic or in vivo use.