

DATASHEET

ASB11 Rabbit Polyclonal Antibody

CAT. NO. APA18641

KEY FEATURES

Target	ASB11	Source / Host	Rabbit
Reactivity	Human	Clonality	Polyclonal
Applications	WB	Conjugation	Unconjugated
Form / Buffer	Liquid in 0.42% Potassium phosphate, 0.87% Sodium chloride, pH 7.3, 30% glycerol, and 0.01% sodium azide.		Storage at -20°C

BACKGROUND

Substrate-recognition component of a cullin-5-RING E3 ubiquitin-protein ligase complex (ECS complex, also named CRL5 complex), which mediates the ubiquitination and subsequent proteasomal degradation of target proteins, such as BIK, DIRAS2 and RPN1, which mediates the ubiquitination and subsequent proteasomal degradation of target proteins, such as BIK, DIRAS2 and RPN1. The ECS(ASB11) complex acts as a regulator of the endoplasmic reticulum unfolded protein response by mediating ubiquitination and degradation of BIK.

APPLICATION

To ensure optimal assay performance, AREX recommends conducting reagent titration tailored to each testing system for optimal detection results.

WB	1:500 - 1:1000
----	----------------

*Results are sample-specific. Please refer to your local assay conditions and test parameters for reference.

PRODUCT OVERVIEW

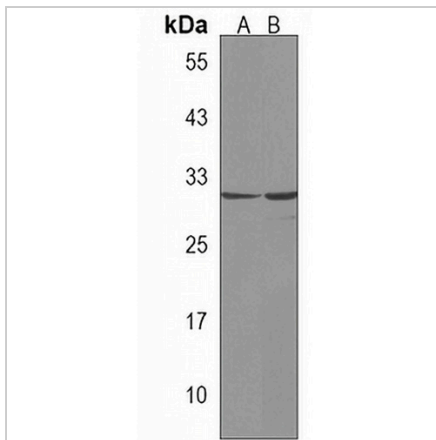
Description	Rabbit polyclonal antibody to ASB11
Specificity	Recognizes endogenous levels of ASB11 protein.
Antibody Type	Primary antibody
Immunogen	KLH-conjugated synthetic peptide encompassing a sequence within the N-terminal region of human ASB11. The exact sequence is proprietary.
Purification	The antibody was purified by immunogen affinity chromatography.
Molecular Weight	Predicted: 35 kD; Observed: 30 kD
Form/Buffer	Liquid in 0.42% Potassium phosphate, 0.87% Sodium chloride, pH 7.3, 30% glycerol, and 0.01% sodium azide.
Alternative Names	Ankyrin repeat and SOCS box protein 11; ASB-11
Gene Symbol	ASB11
Entrez Gene	140456(Human)
SwissProt	Q8WXH4(Human)

*AREX continuously optimizes our products. Webpage content may not reflect the latest updates. For inquiries, please contact info@arexbio.com or your local distributor.

*Clone Number, Reactivity, Source/Host and Clonality can be found in the product name and Key Features section above.

DATASHEET**ASB11 Rabbit Polyclonal Antibody**

CAT. NO. APA18641

DATA

Western blot analysis of ASB11 expression in MDAMB231 (A), MDAMB453 (B) whole cell lysates. (Predicted band size: 35 kD; Observed band size: 30 kD)

STORAGE

Store at 4°C short term. For long term storage, store at -20°C, avoiding freeze/thaw cycles.

NOTE

For Research Use Only. Not for diagnostic, therapeutics, prophylactic or in vivo use.