

DATASHEET

FAM26F Rabbit Polyclonal Antibody

CAT. NO. APA18643

KEY FEATURES

Target	FAM26F	Source / Host	Rabbit
Reactivity	Human	Clonality	Polyclonal
Applications	WB	Conjugation	Unconjugated
Form / Buffer	Liquid in 0.42% Potassium phosphate, 0.87% Sodium chloride, pH 7.3, 30% glycerol, and 0.01% sodium azide.		Storage at -20°C

BACKGROUND

Pore-forming subunit of an ATP-permeable channel . In response to pathogen-derived and proinflammatory stimuli, relocates from intracellular compartments to NK-dendritic cell and NK-macrophage immune synapses where it mediates ATP efflux and NK cell activation involved in antimicrobial and antitumor responses . May assemble to form gap junction channel-like structures with gating and ion conductance likely regulated by membrane lipids and voltage rather than by extracellular calcium levels .

APPLICATION

To ensure optimal assay performance, AREX recommends conducting reagent titration tailored to each testing system for optimal detection results.

WB	1:500 - 1:1000
----	----------------

*Results are sample-specific. Please refer to your local assay conditions and test parameters for reference.

PRODUCT OVERVIEW

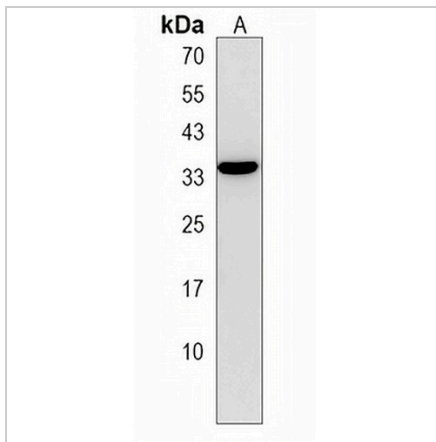
Description	Rabbit polyclonal antibody to FAM26F
Specificity	Recognizes endogenous levels of FAM26F protein.
Antibody Type	Primary antibody
Immunogen	KLH-conjugated synthetic peptide encompassing a sequence within the C-terminal region of human FAM26F. The exact sequence is proprietary.
Purification	The antibody was purified by immunogen affinity chromatography.
Molecular Weight	Predicted: 34 kD; Observed: 34 kD
Form/Buffer	Liquid in 0.42% Potassium phosphate, 0.87% Sodium chloride, pH 7.3, 30% glycerol, and 0.01% sodium azide.
Alternative Names	C6orf187; Protein FAM26F
Gene Symbol	FAM26F
Entrez Gene	441168(Human)
SwissProt	Q5R3K3(Human)

*AREX continuously optimizes our products. Webpage content may not reflect the latest updates. For inquiries, please contact info@arexbio.com or your local distributor.

*Clone Number, Reactivity, Source/Host and Clonality can be found in the product name and Key Features section above.

DATASHEET**FAM26F Rabbit Polyclonal Antibody**

CAT. NO. APA18643

DATA

Western blot analysis of FAM26F expression in NCIH460 (A) whole cell lysates. (Predicted band size: 34 kD; Observed band size: 34 kD)

STORAGE

Store at 4°C short term. For long term storage, store at -20°C, avoiding freeze/thaw cycles.

NOTE

For Research Use Only. Not for diagnostic, therapeutics, prophylactic or in vivo use.