

DATASHEET

NAALAD2 Rabbit Polyclonal Antibody

CAT. NO. APA18644

KEY FEATURES

Target	NAALAD2	Source / Host	Rabbit
Reactivity	Human	Clonality	Polyclonal
Applications	WB	Conjugation	Unconjugated
Form / Buffer	Liquid in 0.42% Potassium phosphate, 0.87% Sodium chloride, pH 7.3, 30% glycerol, and 0.01% sodium azide.		Storage at -20°C

BACKGROUND

Has N-acetylated-alpha-linked-acidic dipeptidase (NAALADase) activity. Also exhibits a dipeptidyl-peptidase IV type activity. Inactivates the peptide neurotransmitter N-acetylaspartylglutamate.

APPLICATION

To ensure optimal assay performance, AREX recommends conducting reagent titration tailored to each testing system for optimal detection results.

WB	1:500 - 1:1000
----	----------------

*Results are sample-specific. Please refer to your local assay conditions and test parameters for reference.

PRODUCT OVERVIEW

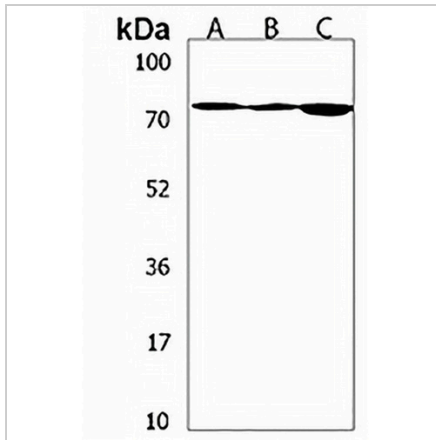
Description	Rabbit polyclonal antibody to NAALAD2
Specificity	Recognizes endogenous levels of NAALAD2 protein.
Antibody Type	Primary antibody
Immunogen	KLH-conjugated synthetic peptide encompassing a sequence within the C-terminal region of human NAALAD2. The exact sequence is proprietary.
Purification	The antibody was purified by immunogen affinity chromatography.
Molecular Weight	Predicted: 83 kD; Observed: 72 kD
Form/Buffer	Liquid in 0.42% Potassium phosphate, 0.87% Sodium chloride, pH 7.3, 30% glycerol, and 0.01% sodium azide.
Alternative Names	N-acetylated-alpha-linked acidic dipeptidase 2; Glutamate carboxypeptidase III; GCPIII; N-acetylated-alpha-linked acidic dipeptidase II; NAALADase II
Gene Symbol	NAALAD2
Entrez Gene	10003(Human)
SwissProt	Q9Y3Q0(Human)

*AREX continuously optimizes our products. Webpage content may not reflect the latest updates. For inquiries, please contact info@arexbio.com or your local distributor.

*Clone Number, Reactivity, Source/Host and Clonality can be found in the product name and Key Features section above.

DATASHEET**NAALAD2 Rabbit Polyclonal Antibody**

CAT. NO. APA18644

DATA

Western blot analysis of NAALAD2 expression in CCRFCM (A), SHSY5Y (B), rat testis (C) whole cell lysates. (Predicted band size: 83 kD; Observed band size: 72 kD)

STORAGE

Store at 4°C short term. For long term storage, store at -20°C, avoiding freeze/thaw cycles.

NOTE

For Research Use Only. Not for diagnostic, therapeutics, prophylactic or in vivo use.