

DATASHEET

SGSM1 Rabbit Polyclonal Antibody

CAT. NO. APA18645

KEY FEATURES

Target	SGSM1	Source / Host	Rabbit
Reactivity	Human	Clonality	Polyclonal
Applications	WB	Conjugation	Unconjugated
Form / Buffer	Liquid in 0.42% Potassium phosphate, 0.87% Sodium chloride, pH 7.3, 30% glycerol, and 0.01% sodium azide.		Storage at-20°C

BACKGROUND

Interacts with numerous Rab family members, functioning as Rab effector for some, and as GTPase activator for others. Promotes GTP hydrolysis by RAB34 and RAB36. Probably functions as a GTPase effector with RAB9A and RAB9B; does not stimulate GTP hydrolysis with RAB9A and RAB9B.

APPLICATION

To ensure optimal assay performance, AREX recommends conducting reagent titration tailored to each testing system for optimal detection results.

WB	1:500 - 1:1000
----	----------------

*Results are sample-specific. Please refer to your local assay conditions and test parameters for reference.

PRODUCT OVERVIEW

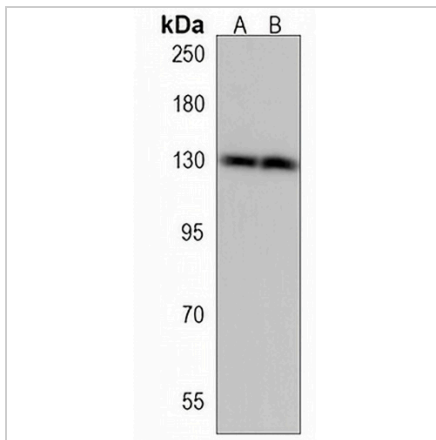
Description	Rabbit polyclonal antibody to SGSM1
Specificity	Recognizes endogenous levels of SGSM1 protein.
Antibody Type	Primary antibody
Immunogen	KLH-conjugated synthetic peptide encompassing a sequence within the Central region of human SGSM1. The exact sequence is proprietary.
Purification	The antibody was purified by immunogen affinity chromatography.
Molecular Weight	Predicted: 129 kD; Observed: 130 kD
Form/Buffer	Liquid in 0.42% Potassium phosphate, 0.87% Sodium chloride, pH 7.3, 30% glycerol, and 0.01% sodium azide.
Alternative Names	KIAA1941; RUTBC2; Small G protein signaling modulator 1; RUN and TBC1 domain-containing protein 2
Gene Symbol	SGSM1
Entrez Gene	129049(Human)
SwissProt	Q2NKQ1(Human)

*AREX continuously optimizes our products. Webpage content may not reflect the latest updates. For inquiries, please contact info@arexbio.com or your local distributor.

*Clone Number, Reactivity, Source/Host and Clonality can be found in the product name and Key Features section above.

DATASHEET**SGSM1 Rabbit Polyclonal Antibody**

CAT. NO. APA18645

DATA

Western blot analysis of SGSM1 expression in 293T (A), U87MG (B) whole cell lysates.
(Predicted band size: 129 kD; Observed band size: 130 kD)

STORAGE

Store at 4°C short term. For long term storage, store at -20°C, avoiding freeze/thaw cycles.

NOTE

For Research Use Only. Not for diagnostic, therapeutics, prophylactic or in vivo use.