

## DATASHEET

# BCL6B Rabbit Polyclonal Antibody

CAT. NO. APA18649

### KEY FEATURES

Target	BCL6B	Source / Host	Rabbit
Reactivity	Human	Clonality	Polyclonal
Applications	WB	Conjugation	Unconjugated
Form / Buffer	Liquid in 0.42% Potassium phosphate, 0.87% Sodium chloride, pH 7.3, 30% glycerol, and 0.01% sodium azide.		Storage at -20°C

### BACKGROUND

Acts as a sequence-specific transcriptional repressor in association with BCL6. May function in a narrow stage or be related to some events in the early B-cell development.

### APPLICATION

To ensure optimal assay performance, AREX recommends conducting reagent titration tailored to each testing system for optimal detection results.

WB	1:500 - 1:1000
----	----------------

\*Results are sample-specific. Please refer to your local assay conditions and test parameters for reference.

### PRODUCT OVERVIEW

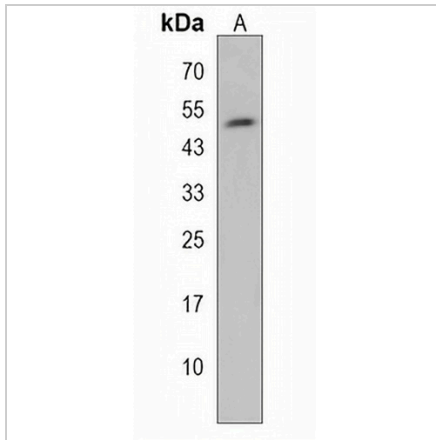
Description	Rabbit polyclonal antibody to BCL6B
Specificity	Recognizes endogenous levels of BCL6B protein.
Antibody Type	Primary antibody
Immunogen	KLH-conjugated synthetic peptide encompassing a sequence within the Central region of human BCL6B. The exact sequence is proprietary.
Purification	The antibody was purified by immunogen affinity chromatography.
Molecular Weight	Predicted: 51 kD; Observed: 52 kD
Form/Buffer	Liquid in 0.42% Potassium phosphate, 0.87% Sodium chloride, pH 7.3, 30% glycerol, and 0.01% sodium azide.
Alternative Names	BAZF; ZNF62; B-cell CLL/lymphoma 6 member B protein; Bcl6-associated zinc finger protein; Zinc finger protein 62
Gene Symbol	BCL6B
Entrez Gene	255877(Human)
SwissProt	Q8N143(Human)

\*AREX continuously optimizes our products. Webpage content may not reflect the latest updates. For inquiries, please contact [info@arexbio.com](mailto:info@arexbio.com) or your local distributor.

\*Clone Number, Reactivity, Source/Host and Clonality can be found in the product name and Key Features section above.

**DATASHEET****BCL6B Rabbit Polyclonal Antibody**

CAT. NO. APA18649

**DATA**

Western blot analysis of BCL6B expression in HepG2 (A) whole cell lysates. (Predicted band size: 51 kD; Observed band size: 52 kD)

**STORAGE**

Store at 4°C short term. For long term storage, store at -20°C, avoiding freeze/thaw cycles.

**NOTE**

For Research Use Only. Not for diagnostic, therapeutics, prophylactic or in vivo use.