

DATASHEET

GTDC1 Rabbit Polyclonal Antibody

CAT. NO. APA18651

KEY FEATURES

Target	GTDC1	Source / Host	Rabbit
Reactivity	Human	Clonality	Polyclonal
Applications	WB	Conjugation	Unconjugated
Form / Buffer	Liquid in 0.42% Potassium phosphate, 0.87% Sodium chloride, pH 7.3, 30% glycerol, and 0.01% sodium azide.		Storage at -20°C

BACKGROUND

Glycosyltransferase that specifically catalyzes mannosylation of cytoplasmic tRNA(Asp) modified with queuosine at position 34 (queuosine(34)) modified with queuosine at position 34 (queuosine(34)). Mannosylates the cyclopentene moiety of queuosine(34) in tRNA(Asp) to form mannosyl-queuosine(34). Mannosylation of queuosine(34) in tRNA(Asp) is required to slow-down elongation at cognate codons, GAC and GAU, thereby regulating protein translation.

APPLICATION

To ensure optimal assay performance, AREX recommends conducting reagent titration tailored to each testing system for optimal detection results.

WB	1:500 - 1:1000
----	----------------

*Results are sample-specific. Please refer to your local assay conditions and test parameters for reference.

PRODUCT OVERVIEW

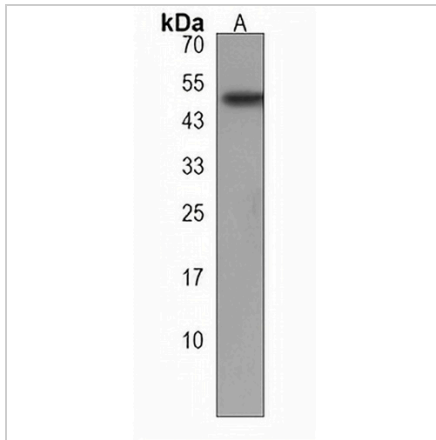
Description	Rabbit polyclonal antibody to GTDC1
Specificity	Recognizes endogenous levels of GTDC1 protein.
Antibody Type	Primary antibody
Immunogen	KLH-conjugated synthetic peptide encompassing a sequence within the Central region of human GTDC1. The exact sequence is proprietary.
Purification	The antibody was purified by immunogen affinity chromatography.
Molecular Weight	Predicted: 52 kD; Observed: 53 kD
Form/Buffer	Liquid in 0.42% Potassium phosphate, 0.87% Sodium chloride, pH 7.3, 30% glycerol, and 0.01% sodium azide.
Alternative Names	Glycosyltransferase-like domain-containing protein 1; Mat-Xa
Gene Symbol	GTDC1
Entrez Gene	79712(Human)
SwissProt	Q4AE62(Human)

*AREX continuously optimizes our products. Webpage content may not reflect the latest updates. For inquiries, please contact info@arexbio.com or your local distributor.

*Clone Number, Reactivity, Source/Host and Clonality can be found in the product name and Key Features section above.

DATASHEET**GTDC1 Rabbit Polyclonal Antibody**

CAT. NO. APA18651

DATA

Western blot analysis of GTDC1 expression in HepG2 (A) whole cell lysates. (Predicted band size: 52 kD; Observed band size: 53 kD)

STORAGE

Store at 4°C short term. For long term storage, store at -20°C, avoiding freeze/thaw cycles.

NOTE

For Research Use Only. Not for diagnostic, therapeutics, prophylactic or in vivo use.