

DATASHEET

GOLGA6L2 Rabbit Polyclonal Antibody

CAT. NO. APA18658

KEY FEATURES

Target	GOLGA6L2	Source / Host	Rabbit
Reactivity	Human	Clonality	Polyclonal
Applications	WB	Conjugation	Unconjugated
Form / Buffer	Liquid in 0.42% Potassium phosphate, 0.87% Sodium chloride, pH 7.3, 30% glycerol, and 0.01% sodium azide.		Storage at -20°C

BACKGROUND

Golgin subfamily A member 6-like protein 2 (GOLGA6L2). Belongs to the GOLGA6 family

APPLICATION

To ensure optimal assay performance, AREX recommends conducting reagent titration tailored to each testing system for optimal detection results.

WB	1:500 - 1:1000
----	----------------

*Results are sample-specific. Please refer to your local assay conditions and test parameters for reference.

PRODUCT OVERVIEW

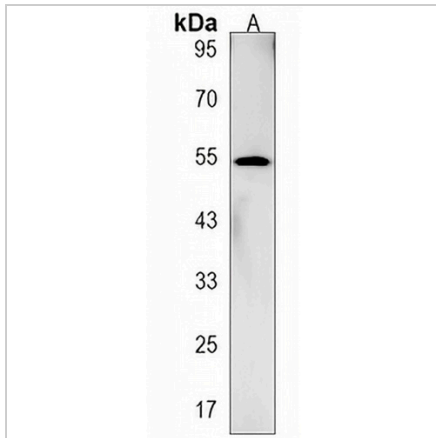
Description	Rabbit polyclonal antibody to GOLGA6L2
Specificity	Recognizes endogenous levels of GOLGA6L2 protein.
Antibody Type	Primary antibody
Immunogen	KLH-conjugated synthetic peptide encompassing a sequence within the N-terminal region of human GOLGA6L2. The exact sequence is proprietary.
Purification	The antibody was purified by immunogen affinity chromatography.
Molecular Weight	Predicted: 100 kD; Observed: 50 kD
Form/Buffer	Liquid in 0.42% Potassium phosphate, 0.87% Sodium chloride, pH 7.3, 30% glycerol, and 0.01% sodium azide.
Alternative Names	Golgin subfamily A member 6-like protein 2
Gene Symbol	GOLGA6L2
Entrez Gene	283685(Human)
SwissProt	Q8N9W4(Human)

*AREX continuously optimizes our products. Webpage content may not reflect the latest updates. For inquiries, please contact info@arexbio.com or your local distributor.

*Clone Number, Reactivity, Source/Host and Clonality can be found in the product name and Key Features section above.

DATASHEET**GOLGA6L2 Rabbit Polyclonal Antibody**

CAT. NO. APA18658

DATA

Western blot analysis of GOLGA6L2 expression in human testis (A) whole cell lysates.
(Predicted band size: 100 kD; Observed band size: 50 kD)

STORAGE

Store at 4°C short term. For long term storage, store at -20°C, avoiding freeze/thaw cycles.

NOTE

For Research Use Only. Not for diagnostic, therapeutics, prophylactic or in vivo use.