

DATASHEET

ZRSR2 Rabbit Polyclonal Antibody

CAT. NO. APA18662

KEY FEATURES

Target	ZRSR2	Source / Host	Rabbit
Reactivity	Human	Clonality	Polyclonal
Applications	WB, IHC	Conjugation	Unconjugated
Form / Buffer	Liquid in 0.42% Potassium phosphate, 0.87% Sodium chloride, pH 7.3, 30% glycerol, and 0.01% sodium azide.		Storage at -20°C

BACKGROUND

Pre-mRNA-binding protein required for splicing of both U2- and U12-type introns. Selectively interacts with the 3'-splice site of U2- and U12-type pre-mRNAs and promotes different steps in U2 and U12 intron splicing. Recruited to U12 pre-mRNAs in an ATP-dependent manner and is required for assembly of the pre-spliceosome, a precursor to other spliceosomal complexes. For U2-type introns, it is selectively and specifically required for the second step of splicing.

APPLICATION

To ensure optimal assay performance, AREX recommends conducting reagent titration tailored to each testing system for optimal detection results.

WB	1:500 - 1:1000
IHC	1:50 - 1:200

*Results are sample-specific. Please refer to your local assay conditions and test parameters for reference.

PRODUCT OVERVIEW

Description	Rabbit polyclonal antibody to ZRSR2
Specificity	Recognizes endogenous levels of ZRSR2 protein.
Antibody Type	Primary antibody
Immunogen	KLH-conjugated synthetic peptide encompassing a sequence within the C-terminal region of human ZRSR2. The exact sequence is proprietary.
Purification	The antibody was purified by immunogen affinity chromatography.
Molecular Weight	Predicted: 58 kD; Observed: 60 kD
Form/Buffer	Liquid in 0.42% Potassium phosphate, 0.87% Sodium chloride, pH 7.3, 30% glycerol, and 0.01% sodium azide.
Alternative Names	U2AF1-RS2; U2AF1L2; U2AF1RS2; URP; U2 small nuclear ribonucleoprotein auxiliary factor 35 kDa subunit-related protein 2; CCCH type zinc finger, RNA-binding motif and serine/arginine rich protein 2; Renal carcinoma antigen NY-REN-20; U2(RNU2) small nuclear RNA auxiliary factor 1-like 2; U2AF35-related protein; URP
Gene Symbol	ZRSR2
Entrez Gene	8233(Human)
SwissProt	Q15696(Human)

*AREX continuously optimizes our products. Webpage content may not reflect the latest updates. For inquiries, please contact info@arexbio.com or your local distributor.

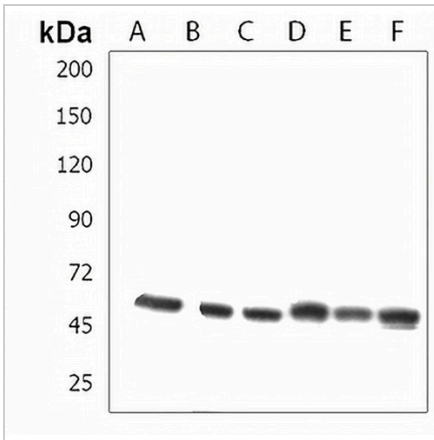
*Clone Number, Reactivity, Source/Host and Clonality can be found in the product name and Key Features section above.

DATASHEET

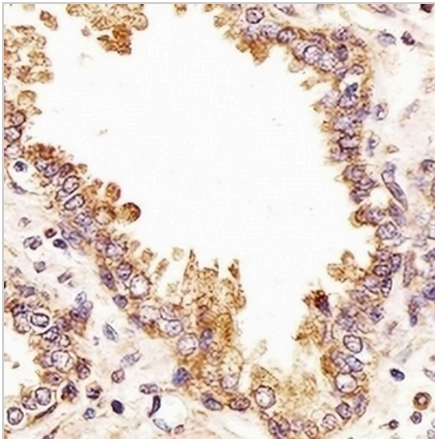
ZRSR2 Rabbit Polyclonal Antibody

CAT. NO. APA18662

DATA



Western blot analysis of ZRSR2 expression in 293 (A), HepG2 (B), HL60 (C), Jurkat (D), MCF7 (E), ZR751 (F) whole cell lysates. (Predicted band size: 58 kD; Observed band size: 60 kD)



Immunohistochemical analysis of ZRSR2 staining in human prostate formalin fixed paraffin embedded tissue section. The section was pre-treated using heat mediated antigen retrieval with sodium citrate buffer (pH 6.0). The section was then incubated with the antibody at room temperature and detected using an HRP conjugated compact polymer system. DAB was used as the chromogen. The section was then counterstained with haematoxylin and mounted with DPX.

STORAGE

Store at 4°C short term. For long term storage, store at -20°C, avoiding freeze/thaw cycles.

NOTE

For Research Use Only. Not for diagnostic, therapeutics, prophylactic or in vivo use.