

DATASHEET

GPR58 Rabbit Polyclonal Antibody

CAT. NO. APA18673

KEY FEATURES

Target	GPR58	Source / Host	Rabbit
Reactivity	Human	Clonality	Polyclonal
Applications	WB, IHC	Conjugation	Unconjugated
Form / Buffer	Liquid in 0.42% Potassium phosphate, 0.87% Sodium chloride, pH 7.3, 30% glycerol, and 0.01% sodium azide.		Storage at -20°C

BACKGROUND

Orphan olfactory receptor specific for trace amines. Trace amine compounds are enriched in animal body fluids and act on trace amine-associated receptors (TAARs) to elicit both intraspecific and interspecific innate behaviors. Ligand-binding causes a conformation change that triggers signaling via the G(s)-class of G-proteins which activate adenylate cyclase.

APPLICATION

To ensure optimal assay performance, AREX recommends conducting reagent titration tailored to each testing system for optimal detection results.

WB	1:500 - 1:1000
IHC	1:50 - 1:200

*Results are sample-specific. Please refer to your local assay conditions and test parameters for reference.

PRODUCT OVERVIEW

Description	Rabbit polyclonal antibody to GPR58
Specificity	Recognizes endogenous levels of GPR58 protein.
Antibody Type	Primary antibody
Immunogen	KLH-conjugated synthetic peptide encompassing a sequence within the N-terminal region of human GPR58. The exact sequence is proprietary.
Purification	The antibody was purified by immunogen affinity chromatography.
Molecular Weight	Predicted: 40 kD; Observed: 40 kD
Form/Buffer	Liquid in 0.42% Potassium phosphate, 0.87% Sodium chloride, pH 7.3, 30% glycerol, and 0.01% sodium azide.
Alternative Names	GPR58; Trace amine-associated receptor 2; TaR-2; Trace amine receptor 2; G-protein coupled receptor 58
Gene Symbol	TAAR2
Entrez Gene	9287(Human)
SwissProt	Q9P1P5(Human)

*AREX continuously optimizes our products. Webpage content may not reflect the latest updates. For inquiries, please contact info@arexbio.com or your local distributor.

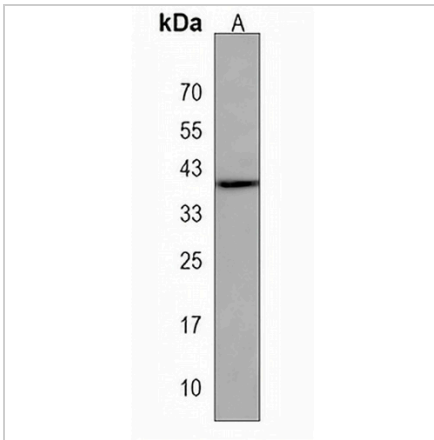
*Clone Number, Reactivity, Source/Host and Clonality can be found in the product name and Key Features section above.

DATASHEET

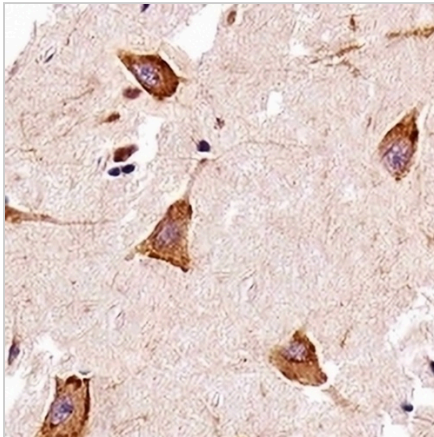
GPR58 Rabbit Polyclonal Antibody

CAT. NO. APA18673

DATA



Western blot analysis of GPR58 expression in Jurkat (A) whole cell lysates. (Predicted band size: 40 kD; Observed band size: 40 kD)



Immunohistochemical analysis of GPR58 staining in human brain formalin fixed paraffin embedded tissue section. The section was pre-treated using heat mediated antigen retrieval with sodium citrate buffer (pH 6.0). The section was then incubated with the antibody at room temperature and detected using an HRP conjugated compact polymer system. DAB was used as the chromogen. The section was then counterstained with haematoxylin and mounted with DPX.

STORAGE

Store at 4°C short term. For long term storage, store at -20°C, avoiding freeze/thaw cycles.

NOTE

For Research Use Only. Not for diagnostic, therapeutics, prophylactic or in vivo use.