

DATASHEET

TRIM6 Rabbit Polyclonal Antibody

CAT. NO. APA18675

KEY FEATURES

Target	TRIM6	Source / Host	Rabbit
Reactivity	Human	Clonality	Polyclonal
Applications	WB	Conjugation	Unconjugated
Form / Buffer	Liquid in 0.42% Potassium phosphate, 0.87% Sodium chloride, pH 7.3, 30% glycerol, and 0.01% sodium azide.		Storage at -20°C

BACKGROUND

E3 ubiquitin ligase that plays a crucial role in the activation of the IKKε-dependent branch of the type I interferon signaling pathway. In concert with the ubiquitin-conjugating E2 enzyme UBE2K, synthesizes unanchored 'Lys-48'-linked polyubiquitin chains that promote the oligomerization and autophosphorylation of IKKε leading to stimulation of an antiviral response. Also ubiquitinates MYC and inhibits its transcription activation activity, maintaining the pluripotency of embryonic stem cells. Promotes the association of unanchored 'Lys-48'-polyubiquitin chains with DHX16 leading to enhanced RIGI-mediated innate antiviral immune response.

APPLICATION

To ensure optimal assay performance, AREX recommends conducting reagent titration tailored to each testing system for optimal detection results.

WB	1:500 - 1:1000
----	----------------

*Results are sample-specific. Please refer to your local assay conditions and test parameters for reference.

PRODUCT OVERVIEW

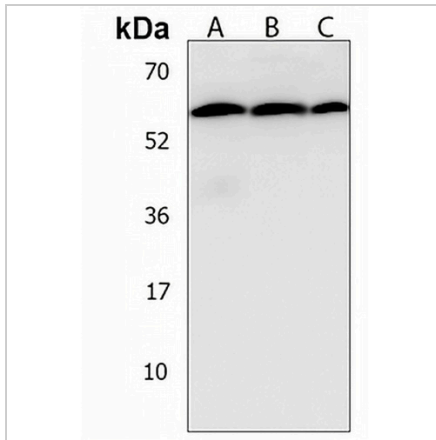
Description	Rabbit polyclonal antibody to TRIM6
Specificity	Recognizes endogenous levels of TRIM6 protein.
Antibody Type	Primary antibody
Immunogen	KLH-conjugated synthetic peptide encompassing a sequence within the N-terminal region of human TRIM6. The exact sequence is proprietary.
Purification	The antibody was purified by immunogen affinity chromatography.
Molecular Weight	Predicted: 56 kD; Observed: 59 kD
Form/Buffer	Liquid in 0.42% Potassium phosphate, 0.87% Sodium chloride, pH 7.3, 30% glycerol, and 0.01% sodium azide.
Alternative Names	RNF89; Tripartite motif-containing protein 6; RING finger protein 89
Gene Symbol	TRIM6
Entrez Gene	117854(Human)
SwissProt	Q9C030(Human)

*AREX continuously optimizes our products. Webpage content may not reflect the latest updates. For inquiries, please contact info@arexbio.com or your local distributor.

*Clone Number, Reactivity, Source/Host and Clonality can be found in the product name and Key Features section above.

DATASHEET**TRIM6 Rabbit Polyclonal Antibody**

CAT. NO. APA18675

DATA

Western blot analysis of TRIM6 expression in Ramos (A), U2OS (B), PC3 (C) whole cell lysates. (Predicted band size: 56 kD; Observed band size: 59 kD)

STORAGE

Store at 4°C short term. For long term storage, store at -20°C, avoiding freeze/thaw cycles.

NOTE

For Research Use Only. Not for diagnostic, therapeutics, prophylactic or in vivo use.