

DATASHEET

CBWD1 Rabbit Polyclonal Antibody

CAT. NO. APA18680

KEY FEATURES

Target	CBWD1	Source / Host	Rabbit
Reactivity	Rat	Clonality	Polyclonal
Applications	WB	Conjugation	Unconjugated
Form / Buffer	Liquid in 0.42% Potassium phosphate, 0.87% Sodium chloride, pH 7.3, 30% glycerol, and 0.01% sodium azide.		Storage at -20°C

BACKGROUND

Predicted to enable GTPase activity and zinc chaperone activity. Involved in kidney development. Predicted to be located in nucleus. Predicted to be active in cytoplasm.

APPLICATION

To ensure optimal assay performance, AREX recommends conducting reagent titration tailored to each testing system for optimal detection results.

WB	1:500 - 1:1000
----	----------------

*Results are sample-specific. Please refer to your local assay conditions and test parameters for reference.

PRODUCT OVERVIEW

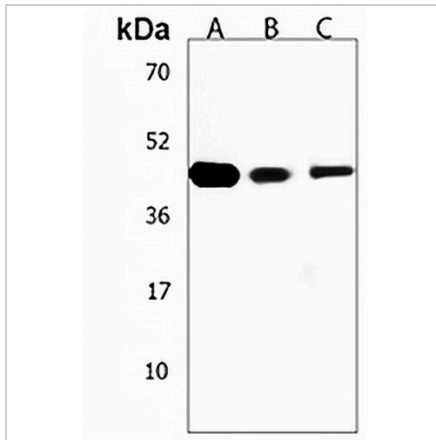
Description	Rabbit polyclonal antibody to CBWD1
Specificity	Recognizes endogenous levels of CBWD1 protein.
Antibody Type	Primary antibody
Immunogen	KLH-conjugated synthetic peptide encompassing a sequence within the C-terminal region of human CBWD1. The exact sequence is proprietary.
Purification	The antibody was purified by immunogen affinity chromatography.
Molecular Weight	Predicted: 43 kD; Observed: 44 kD
Form/Buffer	Liquid in 0.42% Potassium phosphate, 0.87% Sodium chloride, pH 7.3, 30% glycerol, and 0.01% sodium azide.
Alternative Names	COBW domain-containing protein 1; Cobalamin synthase W domain-containing protein 1; COBP; NPC-A-6 COBW domain-containing protein 1; NPC-A-6
Gene Symbol	CBWD1
Entrez Gene	171057(Rat)
SwissProt	Q99MB4(Rat)

*AREX continuously optimizes our products. Webpage content may not reflect the latest updates. For inquiries, please contact info@arexbio.com or your local distributor.

*Clone Number, Reactivity, Source/Host and Clonality can be found in the product name and Key Features section above.

DATASHEET**CBWD1 Rabbit Polyclonal Antibody**

CAT. NO. APA18680

DATA

Western blot analysis of CBWD1 expression in rat bladder (A), rat cerebellum (B), rat stomach (C) whole cell lysates. (Predicted band size: 43 kD; Observed band size: 44 kD)

STORAGE

Store at 4°C short term. For long term storage, store at -20°C, avoiding freeze/thaw cycles.

NOTE

For Research Use Only. Not for diagnostic, therapeutics, prophylactic or in vivo use.