

**DATASHEET**

**ST7L Rabbit Polyclonal Antibody**

CAT. NO. APA18683

**KEY FEATURES**

Target	ST7L	Source / Host	Rabbit
Reactivity	Human	Clonality	Polyclonal
Applications	WB	Conjugation	Unconjugated
Form / Buffer	Liquid in 0.42% Potassium phosphate, 0.87% Sodium chloride, pH 7.3, 30% glycerol, and 0.01% sodium azide.		Storage at-20°C

**BACKGROUND**

This gene was identified by its similarity to the ST7 tumor suppressor gene found in the chromosome 7q31 region. This gene is clustered in a tail-to-tail manner with the WNT2B gene in a chromosomal region known to be deleted and rearranged in a variety of cancers. Several transcript variants encoding many different isoforms have been described, but some have not been fully characterized.

**APPLICATION**

To ensure optimal assay performance, AREX recommends conducting reagent titration tailored to each testing system for optimal detection results.

WB	1:500 - 1:1000
----	----------------

\*Results are sample-specific. Please refer to your local assay conditions and test parameters for reference.

**PRODUCT OVERVIEW**

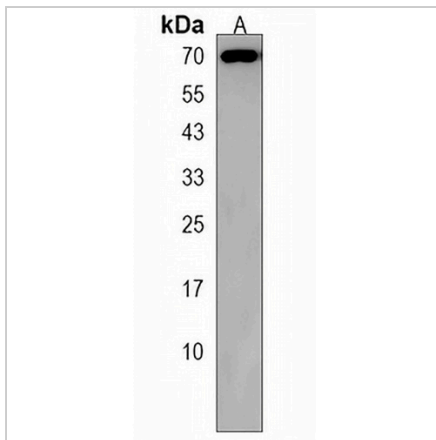
Description	Rabbit polyclonal antibody to ST7L
Specificity	Recognizes endogenous levels of ST7L protein.
Antibody Type	Primary antibody
Immunogen	KLH-conjugated synthetic peptide encompassing a sequence within the C-terminal region of human ST7L. The exact sequence is proprietary.
Purification	The antibody was purified by immunogen affinity chromatography.
Molecular Weight	Predicted: 64 kD; Observed: 70 kD
Form/Buffer	Liquid in 0.42% Potassium phosphate, 0.87% Sodium chloride, pH 7.3, 30% glycerol, and 0.01% sodium azide.
Alternative Names	ST7R; Suppressor of tumorigenicity 7 protein-like; ST7-related protein
Gene Symbol	ST7L
Entrez Gene	54879(Human)
SwissProt	Q8TDW4(Human)

\*AREX continuously optimizes our products. Webpage content may not reflect the latest updates. For inquiries, please contact [info@arexbio.com](mailto:info@arexbio.com) or your local distributor.

\*Clone Number, Reactivity, Source/Host and Clonality can be found in the product name and Key Features section above.

**DATASHEET****ST7L Rabbit Polyclonal Antibody**

CAT. NO. APA18683

**DATA**

Western blot analysis of ST7L expression in A375 (A) whole cell lysates. (Predicted band size: 64 kD; Observed band size: 70 kD)

**STORAGE**

Store at 4°C short term. For long term storage, store at -20°C, avoiding freeze/thaw cycles.

**NOTE**

For Research Use Only. Not for diagnostic, therapeutics, prophylactic or in vivo use.