

**DATASHEET**

**SLC25A25 Rabbit Polyclonal Antibody**

CAT. NO. APA18684

**KEY FEATURES**

Target	SLC25A25	Source / Host	Rabbit
Reactivity	Human, Rat	Clonality	Polyclonal
Applications	WB, IHC	Conjugation	Unconjugated
Form / Buffer	Liquid in 0.42% Potassium phosphate, 0.87% Sodium chloride, pH 7.3, 30% glycerol, and 0.01% sodium azide.		Storage at -20°C

**BACKGROUND**

Electroneutral antiporter that most probably mediates the transport of adenyly nucleotides through the inner mitochondrial membrane . Has calcium-dependent ATP-magnesium/inorganic phosphate antiporter activity . Could also have a broader specificity for adenyly nucleotides . By regulating the mitochondrial matrix adenyly nucleotide pool, could adapt to changing cellular energetic demands and indirectly regulate adenyly nucleotide-dependent metabolic pathways . Acts downstream of Ca(2+)-permeable cation channel PKD2/TRPP2 and it is likely that PKD2-mediated Ca(2+) signaling activates SLC25A25 antiporter activity . Required for left-right pattern specification .

**APPLICATION**

To ensure optimal assay performance, AREX recommends conducting reagent titration tailored to each testing system for optimal detection results.

WB	1:500 - 1:1000
IHC	1:50 - 1:200

\*Results are sample-specific. Please refer to your local assay conditions and test parameters for reference.

**PRODUCT OVERVIEW**

Description	Rabbit polyclonal antibody to SLC25A25
Specificity	Recognizes endogenous levels of SLC25A25 protein.
Antibody Type	Primary antibody
Immunogen	KLH-conjugated synthetic peptide encompassing a sequence within the N-terminal region of human SLC25A25. The exact sequence is proprietary.
Purification	The antibody was purified by immunogen affinity chromatography.
Molecular Weight	Predicted: 52 kD; Observed: 52 kD
Form/Buffer	Liquid in 0.42% Potassium phosphate, 0.87% Sodium chloride, pH 7.3, 30% glycerol, and 0.01% sodium azide.
Alternative Names	APC3; KIAA1896; MCSC3; SCAMC2; Calcium-binding mitochondrial carrier protein SCaMC-2; Mitochondrial ATP-Mg/Pi carrier protein 3; Mitochondrial Ca(2+)-dependent solute carrier protein 3; Small calcium-binding mitochondrial carrier protein 2; Solute carrier family 25 member 25
Gene Symbol	SLC25A25
Entrez Gene	114789(Human); 246771(Rat)
SwissProt	Q6KCM7(Human); Q8K3P6(Rat)

\*AREX continuously optimizes our products. Webpage content may not reflect the latest updates. For inquiries, please contact [info@arexbio.com](mailto:info@arexbio.com) or your local distributor.

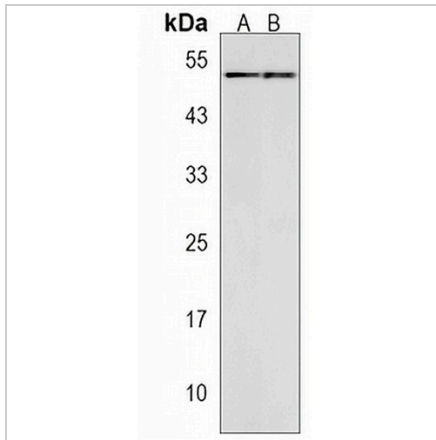
\*Clone Number, Reactivity, Source/Host and Clonality can be found in the product name and Key Features section above.

**DATASHEET**

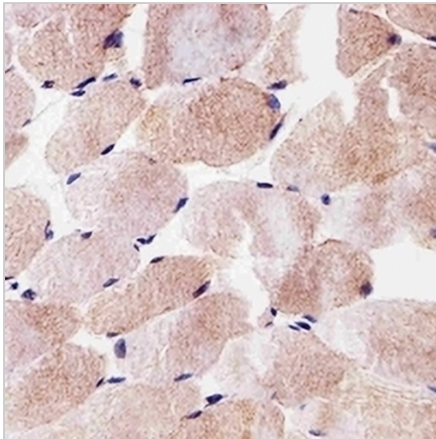
**SLC25A25 Rabbit Polyclonal Antibody**

CAT. NO. APA18684

**DATA**



Western blot analysis of SLC25A25 expression in U937 (A), rat cerebellum (B) whole cell lysates. (Predicted band size: 52 kD; Observed band size: 52 kD)



Immunohistochemical analysis of SLC25A25 staining in human skeletal muscle formalin fixed paraffin embedded tissue section. The section was pre-treated using heat mediated antigen retrieval with sodium citrate buffer (pH 6.0). The section was then incubated with the antibody at room temperature and detected using an HRP conjugated compact polymer system. DAB was used as the chromogen. The section was then counterstained with haematoxylin and mounted with DPX.

**STORAGE**

Store at 4°C short term. For long term storage, store at -20°C, avoiding freeze/thaw cycles.

**NOTE**

For Research Use Only. Not for diagnostic, therapeutics, prophylactic or in vivo use.