

**DATASHEET**

**GPR164 Rabbit Polyclonal Antibody**

CAT. NO. APA18687

**KEY FEATURES**

Target	GPR164	Source / Host	Rabbit
Reactivity	Human	Clonality	Polyclonal
Applications	WB	Conjugation	Unconjugated
Form / Buffer	Liquid in 0.42% Potassium phosphate, 0.87% Sodium chloride, pH 7.3, 30% glycerol, and 0.01% sodium azide.		Storage at -20°C

**BACKGROUND**

Odorant receptor.

**APPLICATION**

To ensure optimal assay performance, AREX recommends conducting reagent titration tailored to each testing system for optimal detection results.

WB	1:500 - 1:1000
----	----------------

\*Results are sample-specific. Please refer to your local assay conditions and test parameters for reference.

**PRODUCT OVERVIEW**

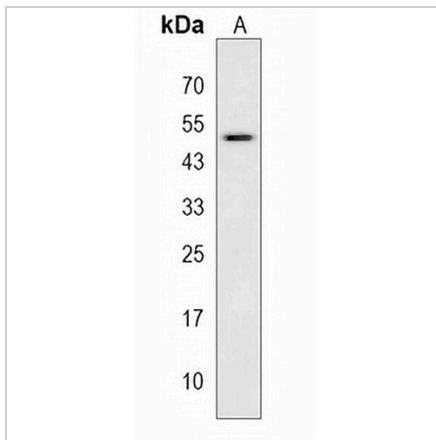
Description	Rabbit polyclonal antibody to GPR164
Specificity	Recognizes endogenous levels of GPR164 protein.
Antibody Type	Primary antibody
Immunogen	KLH-conjugated synthetic peptide encompassing a sequence within the C-terminal region of human GPR164. The exact sequence is proprietary.
Purification	The antibody was purified by immunogen affinity chromatography.
Molecular Weight	Predicted: 35 kD; Observed: 50 kD
Form/Buffer	Liquid in 0.42% Potassium phosphate, 0.87% Sodium chloride, pH 7.3, 30% glycerol, and 0.01% sodium azide.
Alternative Names	GPR164; OR51E1P; OR52A3P; POGR; PSGR2; Olfactory receptor 51E1; D-GPCR; G-protein coupled receptor 164; Olfactory receptor 52A3; Prostate-overexpressed G protein-coupled receptor; Prostate-specific G protein-coupled receptor 2
Gene Symbol	OR51E1
Entrez Gene	143503(Human)
SwissProt	Q8TCB6(Human)

\*AREX continuously optimizes our products. Webpage content may not reflect the latest updates. For inquiries, please contact [info@arexbio.com](mailto:info@arexbio.com) or your local distributor.

\*Clone Number, Reactivity, Source/Host and Clonality can be found in the product name and Key Features section above.

**DATASHEET****GPR164 Rabbit Polyclonal Antibody**

CAT. NO. APA18687

**DATA**

Western blot analysis of GPR164 expression in LNCaP (A) whole cell lysates. (Predicted band size: 35 kD; Observed band size: 50 kD)

**STORAGE**

Store at 4°C short term. For long term storage, store at -20°C, avoiding freeze/thaw cycles.

**NOTE**

For Research Use Only. Not for diagnostic, therapeutics, prophylactic or in vivo use.