

DATASHEET

MTFR2 Rabbit Polyclonal Antibody

CAT. NO. APA18690

KEY FEATURES

Target	MTFR2	Source / Host	Rabbit
Reactivity	Human	Clonality	Polyclonal
Applications	WB	Conjugation	Unconjugated
Form / Buffer	Liquid in 0.42% Potassium phosphate, 0.87% Sodium chloride, pH 7.3, 30% glycerol, and 0.01% sodium azide.		Storage at-20°C

BACKGROUND

May play a role in mitochondrial aerobic respiration essentially in the testis. Can also promote mitochondrial fission .

APPLICATION

To ensure optimal assay performance, AREX recommends conducting reagent titration tailored to each testing system for optimal detection results.

WB	1:500 - 1:1000
----	----------------

*Results are sample-specific. Please refer to your local assay conditions and test parameters for reference.

PRODUCT OVERVIEW

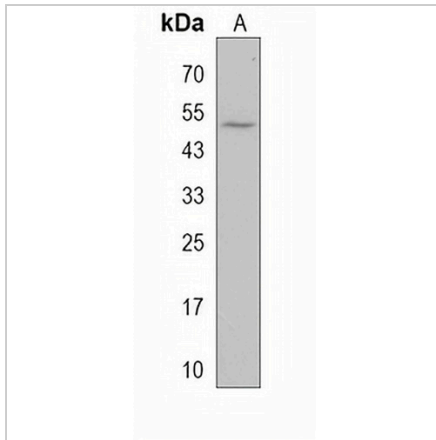
Description	Rabbit polyclonal antibody to MTFR2
Specificity	Recognizes endogenous levels of MTFR2 protein.
Antibody Type	Primary antibody
Immunogen	KLH-conjugated synthetic peptide encompassing a sequence within the C-terminal region of human MTFR2. The exact sequence is proprietary.
Purification	The antibody was purified by immunogen affinity chromatography.
Molecular Weight	Predicted: 43 kD; Observed: 48 kD
Form/Buffer	Liquid in 0.42% Potassium phosphate, 0.87% Sodium chloride, pH 7.3, 30% glycerol, and 0.01% sodium azide.
Alternative Names	DUFD1; FAM54A; Mitochondrial fission regulator 2; DUF729 domain-containing protein 1
Gene Symbol	MTFR2
Entrez Gene	113115(Human)
SwissProt	Q6P444(Human)

*AREX continuously optimizes our products. Webpage content may not reflect the latest updates. For inquiries, please contact info@arexbio.com or your local distributor.

*Clone Number, Reactivity, Source/Host and Clonality can be found in the product name and Key Features section above.

DATASHEET**MTFR2 Rabbit Polyclonal Antibody**

CAT. NO. APA18690

DATA

Western blot analysis of MTFR2 expression in LNCaP (A) whole cell lysates. (Predicted band size: 43 kD; Observed band size: 48 kD)

STORAGE

Store at 4°C short term. For long term storage, store at -20°C, avoiding freeze/thaw cycles.

NOTE

For Research Use Only. Not for diagnostic, therapeutics, prophylactic or in vivo use.