

DATASHEET

FXYD6 Rabbit Polyclonal Antibody

CAT. NO. APA18707

KEY FEATURES

Target	FXYD6	Source / Host	Rabbit
Reactivity	Human, Mouse, Rat	Clonality	Polyclonal
Applications	WB	Conjugation	Unconjugated
Form / Buffer	Liquid in 0.42% Potassium phosphate, 0.87% Sodium chloride, pH 7.3, 30% glycerol, and 0.01% sodium azide.	Storage	at-20°C

BACKGROUND

Associates with and regulates the activity of the sodium/potassium-transporting ATPase (NKA) which catalyzes the hydrolysis of ATP coupled with the exchange of Na(+) and K(+) ions across the plasma membrane. Reduces the apparent affinity for intracellular Na(+) with no change in the apparent affinity for extracellular K(+) which catalyzes the hydrolysis of ATP coupled with the exchange of Na(+) and K(+) ions across the plasma membrane. Reduces the apparent affinity for intracellular Na(+) with no change in the apparent affinity for extracellular K(+) . In addition to modulating NKA kinetics, may also function as a regulator of NKA localization to the plasma membrane .

APPLICATION

To ensure optimal assay performance, AREX recommends conducting reagent titration tailored to each testing system for optimal detection results.

WB	1:500 - 1:1000
----	----------------

*Results are sample-specific. Please refer to your local assay conditions and test parameters for reference.

PRODUCT OVERVIEW

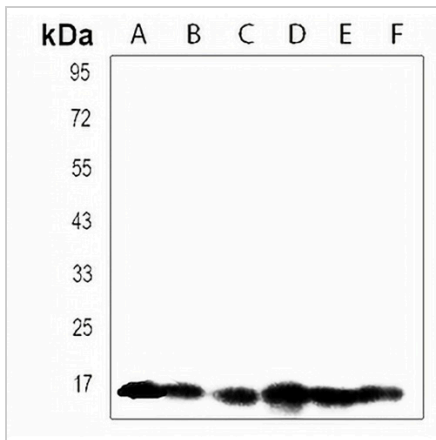
Description	Rabbit polyclonal antibody to FXYD6
Specificity	Recognizes endogenous levels of FXYD6 protein.
Antibody Type	Primary antibody
Immunogen	KLH-conjugated synthetic peptide encompassing a sequence within the C-terminal region of human FXYD6. The exact sequence is proprietary.
Purification	The antibody was purified by immunogen affinity chromatography.
Molecular Weight	Predicted: 10 kD; Observed: 16 kD
Form/Buffer	Liquid in 0.42% Potassium phosphate, 0.87% Sodium chloride, pH 7.3, 30% glycerol, and 0.01% sodium azide.
Alternative Names	FXYD domain-containing ion transport regulator 6; Phosphohippolin
Gene Symbol	FXYD6
Entrez Gene	100533181; 53826(Human); 59095(Mouse); 63847(Rat)
SwissProt	Q9H0Q3(Human); Q9D164(Mouse); Q91XV6(Rat)

*AREX continuously optimizes our products. Webpage content may not reflect the latest updates. For inquiries, please contact info@arexbio.com or your local distributor.

*Clone Number, Reactivity, Source/Host and Clonality can be found in the product name and Key Features section above.

DATASHEET**FXYD6 Rabbit Polyclonal Antibody**

CAT. NO. APA18707

DATA

Western blot analysis of FXYD6 expression in human cerebellum (A), human brain (B), SHSY5Y (C), mouse brain (D), mouse cerebellum (E), rat brain (F) whole cell lysates. (Predicted band size: 10 kD; Observed band size: 16 kD)

STORAGE

Store at 4°C short term. For long term storage, store at -20°C, avoiding freeze/thaw cycles.

NOTE

For Research Use Only. Not for diagnostic, therapeutics, prophylactic or in vivo use.