

DATASHEET

PIP4K2C Rabbit Polyclonal Antibody

CAT. NO. APA18713

KEY FEATURES

Target	PIP4K2C	Source / Host	Rabbit
Reactivity	Mouse, Rat	Clonality	Polyclonal
Applications	WB	Conjugation	Unconjugated
Form / Buffer	Liquid in 0.42% Potassium phosphate, 0.87% Sodium chloride, pH 7.3, 30% glycerol, and 0.01% sodium azide.		Storage at -20°C

BACKGROUND

Enables 1-phosphatidylinositol-4-phosphate 5-kinase activity and identical protein binding activity. Involved in 1-phosphatidylinositol-1D-myo-inositol 4,5-bisphosphate biosynthetic process; negative regulation of insulin receptor signaling pathway; and positive regulation of autophagosome assembly. Located in several cellular components, including autophagosome; cytosol; and nucleoplasm.

APPLICATION

To ensure optimal assay performance, AREX recommends conducting reagent titration tailored to each testing system for optimal detection results.

WB	1:500 - 1:1000
----	----------------

*Results are sample-specific. Please refer to your local assay conditions and test parameters for reference.

PRODUCT OVERVIEW

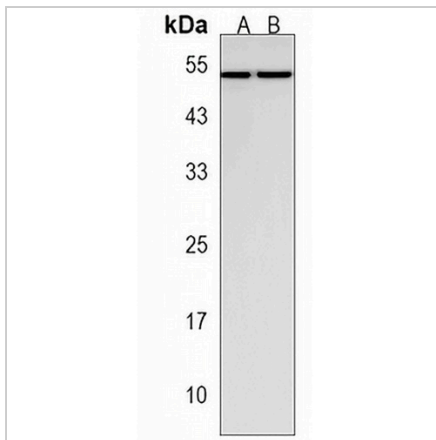
Description	Rabbit polyclonal antibody to PIP4K2C
Specificity	Recognizes endogenous levels of PIP4K2C protein.
Antibody Type	Primary antibody
Immunogen	KLH-conjugated synthetic peptide encompassing a sequence within the N-terminal region of human PIP4K2C. The exact sequence is proprietary.
Purification	The antibody was purified by immunogen affinity chromatography.
Molecular Weight	Predicted: 47 kD; Observed: 47 kD
Form/Buffer	Liquid in 0.42% Potassium phosphate, 0.87% Sodium chloride, pH 7.3, 30% glycerol, and 0.01% sodium azide.
Alternative Names	PIP5K2C; Phosphatidylinositol 5-phosphate 4-kinase type-2 gamma; Phosphatidylinositol 5-phosphate 4-kinase type II gamma; PI(5)P 4-kinase type II gamma; PIP4KII-gamma
Gene Symbol	PIP4K2C
Entrez Gene	117150(Mouse); 140607(Rat)
SwissProt	Q91XU3(Mouse); O88370(Rat)

*AREX continuously optimizes our products. Webpage content may not reflect the latest updates. For inquiries, please contact info@arexbio.com or your local distributor.

*Clone Number, Reactivity, Source/Host and Clonality can be found in the product name and Key Features section above.

DATASHEET**PIP4K2C Rabbit Polyclonal Antibody**

CAT. NO. APA18713

DATA

Western blot analysis of PIP4K2C expression in mouse brain (A), rat brain (B) whole cell lysates. (Predicted band size: 47 kD; Observed band size: 47 kD)

STORAGE

Store at 4°C short term. For long term storage, store at -20°C, avoiding freeze/thaw cycles.

NOTE

For Research Use Only. Not for diagnostic, therapeutics, prophylactic or in vivo use.