

DATASHEET

FATE1 Rabbit Polyclonal Antibody

CAT. NO. APA18717

KEY FEATURES

Target	FATE1	Source / Host	Rabbit
Reactivity	Human	Clonality	Polyclonal
Applications	WB	Conjugation	Unconjugated
Form / Buffer	Liquid in 0.42% Potassium phosphate, 0.87% Sodium chloride, pH 7.3, 30% glycerol, and 0.01% sodium azide.		Storage at-20°C

BACKGROUND

Involved in the regulation of endoplasmic reticulum (ER)-mitochondria coupling. Negatively regulates the ER-mitochondria distance and Ca(2+) transfer from ER to mitochondria possibly implicating it in the regulation of apoptosis -mitochondria coupling. Negatively regulates the ER-mitochondria distance and Ca(2+) transfer from ER to mitochondria possibly implicating it in the regulation of apoptosis . May collaborate with RNF183 to restrain BIK protein levels thus regulating apoptotic signaling .

APPLICATION

To ensure optimal assay performance, AREX recommends conducting reagent titration tailored to each testing system for optimal detection results.

WB	1:500 - 1:1000
----	----------------

*Results are sample-specific. Please refer to your local assay conditions and test parameters for reference.

PRODUCT OVERVIEW

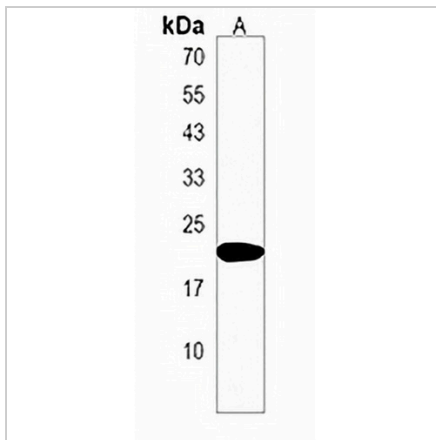
Description	Rabbit polyclonal antibody to FATE1
Specificity	Recognizes endogenous levels of FATE1 protein.
Antibody Type	Primary antibody
Immunogen	KLH-conjugated synthetic peptide encompassing a sequence within the Central region of human FATE1. The exact sequence is proprietary.
Purification	The antibody was purified by immunogen affinity chromatography.
Molecular Weight	Predicted: 20 kD; Observed: 21 kD
Form/Buffer	Liquid in 0.42% Potassium phosphate, 0.87% Sodium chloride, pH 7.3, 30% glycerol, and 0.01% sodium azide.
Alternative Names	FATE; Fetal and adult testis-expressed transcript protein; Cancer/testis antigen 43; CT43; Tumor antigen BJ-HCC-2
Gene Symbol	FATE1
Entrez Gene	89885(Human)
SwissProt	Q969F0(Human)

*AREX continuously optimizes our products. Webpage content may not reflect the latest updates. For inquiries, please contact info@arexbio.com or your local distributor.

*Clone Number, Reactivity, Source/Host and Clonality can be found in the product name and Key Features section above.

DATASHEET**FATE1 Rabbit Polyclonal Antibody**

CAT. NO. APA18717

DATA

Western blot analysis of FATE1 expression in human testis (A) whole cell lysates.
(Predicted band size: 20 kD; Observed band size: 21 kD)

STORAGE

Store at 4°C short term. For long term storage, store at -20°C, avoiding freeze/thaw cycles.

NOTE

For Research Use Only. Not for diagnostic, therapeutics, prophylactic or in vivo use.