

DATASHEET

SPANXA1 Rabbit Polyclonal Antibody

CAT. NO. APA18723

KEY FEATURES

Target	SPANXA1	Source / Host	Rabbit
Reactivity	Human	Clonality	Polyclonal
Applications	WB	Conjugation	Unconjugated
Form / Buffer	Liquid in 0.42% Potassium phosphate, 0.87% Sodium chloride, pH 7.3, 30% glycerol, and 0.01% sodium azide.		Storage at -20°C

BACKGROUND

Temporally regulated transcription and translation of several testis-specific genes is required to initiate the series of molecular and morphological changes in the male germ cell lineage necessary for the formation of mature spermatozoa. This gene is a member of the SPANX family of cancer/testis-associated genes, which are located in a cluster on chromosome X. The SPANX genes encode differentially expressed testis-specific proteins that localize to various subcellular compartments. This particular gene maps to chromosome X in a head-to-head orientation with SPANX family member A2, which appears to be a duplication of the A1 locus. The protein encoded by this gene targets to the nucleus where it associates with nuclear vacuoles and the redundant nuclear envelope.

APPLICATION

To ensure optimal assay performance, AREX recommends conducting reagent titration tailored to each testing system for optimal detection results.

WB	1:500 - 1:1000
----	----------------

*Results are sample-specific. Please refer to your local assay conditions and test parameters for reference.

PRODUCT OVERVIEW

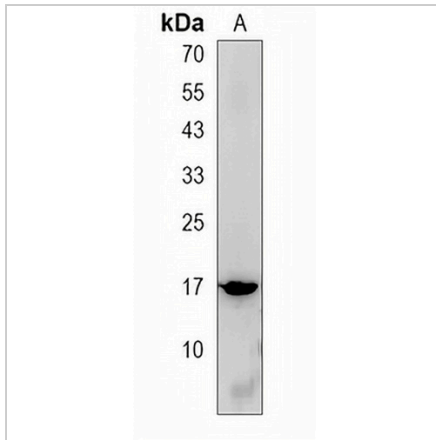
Description	Rabbit polyclonal antibody to SPANXA1
Specificity	Recognizes endogenous levels of SPANXA1 protein.
Antibody Type	Primary antibody
Immunogen	KLH-conjugated synthetic peptide encompassing a sequence within the N-terminal region of human SPANXA1. The exact sequence is proprietary.
Purification	The antibody was purified by immunogen affinity chromatography.
Molecular Weight	Predicted: 11 kD; Observed: 17 kD
Form/Buffer	Liquid in 0.42% Potassium phosphate, 0.87% Sodium chloride, pH 7.3, 30% glycerol, and 0.01% sodium azide.
Alternative Names	SPANXA; Sperm protein associated with the nucleus on the X chromosome A; Cancer/testis antigen 11.1; CT11.1; Nuclear-associated protein SPAN-Xa; SPAN-X; SPANX-A; SPANX family member A
Gene Symbol	SPANXA1
Entrez Gene	30014; 728712(Human)
SwissProt	Q9NS26(Human)

*AREX continuously optimizes our products. Webpage content may not reflect the latest updates. For inquiries, please contact info@arexbio.com or your local distributor.

*Clone Number, Reactivity, Source/Host and Clonality can be found in the product name and Key Features section above.

DATASHEET**SPANXA1 Rabbit Polyclonal Antibody**

CAT. NO. APA18723

DATA

Western blot analysis of SPANXA1 expression in human testis (A) whole cell lysates.
(Predicted band size: 11 kD; Observed band size: 17 kD)

STORAGE

Store at 4°C short term. For long term storage, store at -20°C, avoiding freeze/thaw cycles.

NOTE

For Research Use Only. Not for diagnostic, therapeutics, prophylactic or in vivo use.