

DATASHEET

ZDHHC11 Rabbit Polyclonal Antibody

CAT. NO. APA18728

KEY FEATURES

| | | | |
|---------------|---|---------------|--------------------|
| Target | ZDHHC11 | Source / Host | Rabbit |
| Reactivity | Human | Clonality | Polyclonal |
| Applications | WB | Conjugation | Unconjugated |
| Form / Buffer | Liquid in 0.42% Potassium phosphate, 0.87% Sodium chloride, pH 7.3, 30% glycerol, and 0.01% sodium azide. | | Storage at-20°C |

BACKGROUND

Endoplasmic reticulum-localized palmitoyltransferase that could catalyze the addition of palmitate onto various protein substrates and be involved in a variety of cellular processes . Has a palmitoyltransferase activity toward NCDN and regulates NCDN association with endosome membranes through this palmitoylation . May play a role in cell proliferation .

APPLICATION

To ensure optimal assay performance, AREX recommends conducting reagent titration tailored to each testing system for optimal detection results.

| | |
|----|----------------|
| WB | 1:500 - 1:1000 |
|----|----------------|

*Results are sample-specific. Please refer to your local assay conditions and test parameters for reference.

PRODUCT OVERVIEW

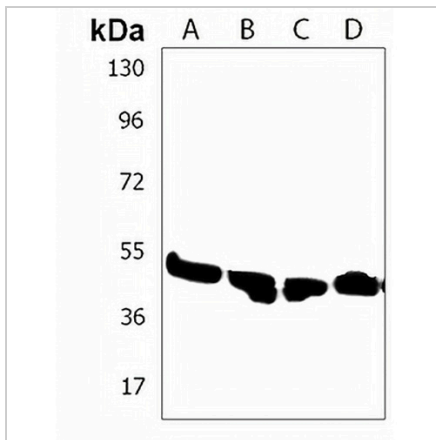
| | |
|-------------------|--|
| Description | Rabbit polyclonal antibody to ZDHHC11 |
| Specificity | Recognizes endogenous levels of ZDHHC11 protein. |
| Antibody Type | Primary antibody |
| Immunogen | KLH-conjugated synthetic peptide encompassing a sequence within the C-terminal region of human ZDHHC11. The exact sequence is proprietary. |
| Purification | The antibody was purified by immunogen affinity chromatography. |
| Molecular Weight | Predicted: 45 kD; Observed: 54 kD |
| Form/Buffer | Liquid in 0.42% Potassium phosphate, 0.87% Sodium chloride, pH 7.3, 30% glycerol, and 0.01% sodium azide. |
| Alternative Names | ZNF399; Probable palmitoyltransferase ZDHHC11; Zinc finger DHHC domain-containing protein 11; DHHC-11; Zinc finger protein 399 |
| Gene Symbol | ZDHHC11 |
| Entrez Gene | 79844(Human) |
| SwissProt | Q9H8X9(Human) |

*AREX continuously optimizes our products. Webpage content may not reflect the latest updates. For inquiries, please contact info@arexbio.com or your local distributor.

*Clone Number, Reactivity, Source/Host and Clonality can be found in the product name and Key Features section above.

DATASHEET**ZDHHC11 Rabbit Polyclonal Antibody**

CAT. NO. APA18728

DATA

Western blot analysis of ZDHHC11 expression in MCF7 (A), T47D (B), ZR751 (C), RPMI 8226 (D) whole cell lysates. (Predicted band size: 45 kD; Observed band size: 54 kD)

STORAGE

Store at 4°C short term. For long term storage, store at -20°C, avoiding freeze/thaw cycles.

NOTE

For Research Use Only. Not for diagnostic, therapeutics, prophylactic or in vivo use.