

DATASHEET

TOMM40L Rabbit Polyclonal Antibody

CAT. NO. APA18738

KEY FEATURES

Target	TOMM40L	Source / Host	Rabbit
Reactivity	Rat	Clonality	Polyclonal
Applications	WB	Conjugation	Unconjugated
Form / Buffer	Liquid in 0.42% Potassium phosphate, 0.87% Sodium chloride, pH 7.3, 30% glycerol, and 0.01% sodium azide.		Storage at -20°C

BACKGROUND

Predicted to enable protein transmembrane transporter activity. Predicted to be involved in protein import into mitochondrial matrix. Located in mitochondrion. Part of protein-containing complex.

APPLICATION

To ensure optimal assay performance, AREX recommends conducting reagent titration tailored to each testing system for optimal detection results.

WB	1:500 - 1:1000
----	----------------

*Results are sample-specific. Please refer to your local assay conditions and test parameters for reference.

PRODUCT OVERVIEW

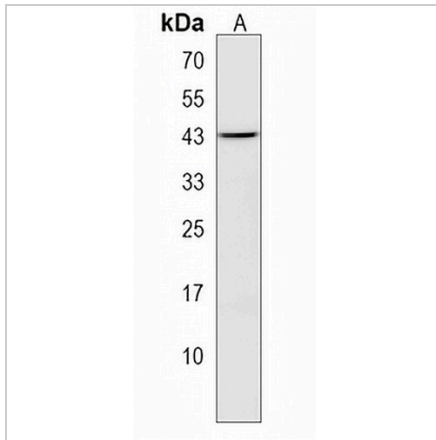
Description	Rabbit polyclonal antibody to TOMM40L
Specificity	Recognizes endogenous levels of TOMM40L protein.
Antibody Type	Primary antibody
Immunogen	KLH-conjugated synthetic peptide encompassing a sequence within the N-terminal region of human TOMM40L. The exact sequence is proprietary.
Purification	The antibody was purified by immunogen affinity chromatography.
Molecular Weight	Predicted: 33 kD; Observed: 40 kD
Form/Buffer	Liquid in 0.42% Potassium phosphate, 0.87% Sodium chloride, pH 7.3, 30% glycerol, and 0.01% sodium azide.
Alternative Names	TOMM40B; Mitochondrial import receptor subunit TOM40B; Protein TOMM40-like
Gene Symbol	TOMM40L
Entrez Gene	304971(Rat)
SwissProt	A4F267(Rat)

*AREX continuously optimizes our products. Webpage content may not reflect the latest updates. For inquiries, please contact info@arexbio.com or your local distributor.

*Clone Number, Reactivity, Source/Host and Clonality can be found in the product name and Key Features section above.

DATASHEET**TOMM40L Rabbit Polyclonal Antibody**

CAT. NO. APA18738

DATA

Western blot analysis of TOMM40L expression in rat heart (A) whole cell lysates.
(Predicted band size: 33 kD; Observed band size: 40 kD)

STORAGE

Store at 4°C short term. For long term storage, store at -20°C, avoiding freeze/thaw cycles.

NOTE

For Research Use Only. Not for diagnostic, therapeutics, prophylactic or in vivo use.