

DATASHEET

PRDM13 Rabbit Polyclonal Antibody

CAT. NO. APA18740

KEY FEATURES

Target	PRDM13	Source / Host	Rabbit
Reactivity	Human	Clonality	Polyclonal
Applications	WB, IHC	Conjugation	Unconjugated
Form / Buffer	Liquid in 0.42% Potassium phosphate, 0.87% Sodium chloride, pH 7.3, 30% glycerol, and 0.01% sodium azide.		Storage at-20°C

BACKGROUND

May be involved in transcriptional regulation. Is required for the differentiation of KISS1-expressing neurons in the arcuate (Arc) nucleus of the hypothalamus. Is a critical regulator of GABAergic cell fate in the cerebellum, required for normal postnatal cerebellar development .

APPLICATION

To ensure optimal assay performance, AREX recommends conducting reagent titration tailored to each testing system for optimal detection results.

WB	1:500 - 1:1000
IHC	1:50 - 1:100

*Results are sample-specific. Please refer to your local assay conditions and test parameters for reference.

PRODUCT OVERVIEW

Description	Rabbit polyclonal antibody to PRDM13
Specificity	Recognizes endogenous levels of PRDM13 protein.
Antibody Type	Primary antibody
Immunogen	KLH-conjugated synthetic peptide encompassing a sequence within the N-terminal region of human PRDM13. The exact sequence is proprietary.
Purification	The antibody was purified by immunogen affinity chromatography.
Molecular Weight	Predicted: 73 kD; Observed: 65 kD
Form/Buffer	Liquid in 0.42% Potassium phosphate, 0.87% Sodium chloride, pH 7.3, 30% glycerol, and 0.01% sodium azide.
Alternative Names	PFM10; PR domain zinc finger protein 13; PR domain-containing protein 13
Gene Symbol	PRDM13
Entrez Gene	59336(Human)
SwissProt	Q9H4Q3(Human)

*AREX continuously optimizes our products. Webpage content may not reflect the latest updates. For inquiries, please contact info@arexbio.com or your local distributor.

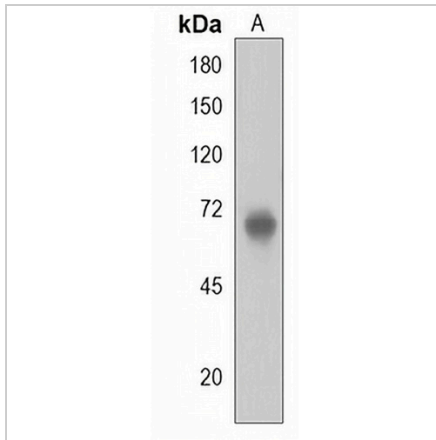
*Clone Number, Reactivity, Source/Host and Clonality can be found in the product name and Key Features section above.

DATASHEET

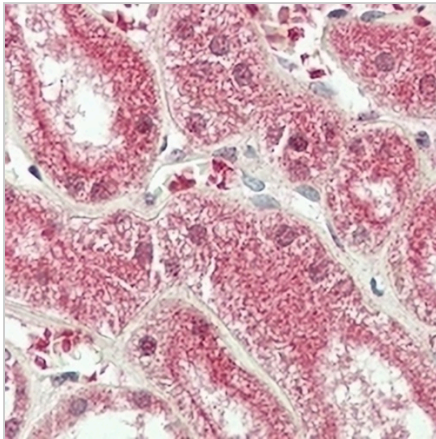
PRDM13 Rabbit Polyclonal Antibody

CAT. NO. APA18740

DATA



Western blot analysis of PRDM13 expression in human ovary (A) whole cell lysates. (Predicted band size: 73 kD; Observed band size: 65 kD)



Immunohistochemical analysis of PRDM13 staining in human kidney formalin fixed paraffin embedded tissue section. The section was pre-treated using heat mediated antigen retrieval with sodium citrate buffer (pH 6.0). The section was then incubated with the antibody at room temperature and detected using an HRP conjugated compact polymer system. DAB was used as the chromogen. The section was then counterstained with haematoxylin and mounted with DPX.

STORAGE

Store at 4°C short term. For long term storage, store at -20°C, avoiding freeze/thaw cycles.

NOTE

For Research Use Only. Not for diagnostic, therapeutics, prophylactic or in vivo use.