

DATASHEET

PRDM16 Rabbit Polyclonal Antibody

CAT. NO. APA18746

KEY FEATURES

Target	PRDM16	Source / Host	Rabbit
Reactivity	Human, Mouse	Clonality	Polyclonal
Applications	WB	Conjugation	Unconjugated
Form / Buffer	Liquid in 0.42% Potassium phosphate, 0.87% Sodium chloride, pH 7.3, 30% glycerol, and 0.01% sodium azide.		Storage at -20°C

BACKGROUND

Transcription regulator that acts both as a histone methyltransferase or chromatin adapter, depending on the context . In the cytoplasm, acts as a histone methyltransferase, which catalyzes monomethylation of 'Lys-9' of free histone H3 (H3K9me1) during translation . Monomethylated histone H3 is then transported to the nucleus and incorporated into nucleosomes where SUV39H methyltransferases (SUV39H1 and SUV39H2) use it as a substrate to catalyze histone H3 'Lys-9' trimethylation (H3K9me3) . Probably one of the primary histone methyltransferases along with MECOM/PRDM3 that direct cytoplasmic H3K9me1 methylation .

APPLICATION

To ensure optimal assay performance, AREX recommends conducting reagent titration tailored to each testing system for optimal detection results.

WB	1:500 - 1:1000
----	----------------

*Results are sample-specific. Please refer to your local assay conditions and test parameters for reference.

PRODUCT OVERVIEW

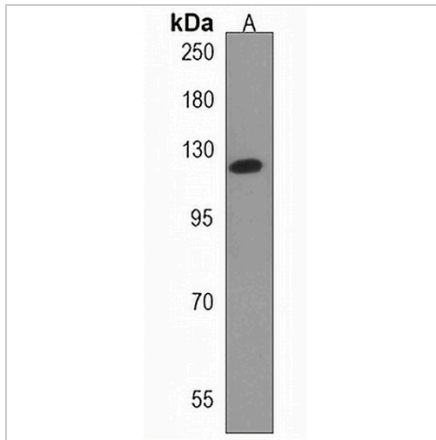
Description	Rabbit polyclonal antibody to PRDM16
Specificity	Recognizes endogenous levels of PRDM16 protein.
Antibody Type	Primary antibody
Immunogen	KLH-conjugated synthetic peptide encompassing a sequence within the Central region of human PRDM16. The exact sequence is proprietary.
Purification	The antibody was purified by immunogen affinity chromatography.
Molecular Weight	Predicted: 140 kD; Observed: 120 kD
Form/Buffer	Liquid in 0.42% Potassium phosphate, 0.87% Sodium chloride, pH 7.3, 30% glycerol, and 0.01% sodium azide.
Alternative Names	KIAA1675; MEL1; PFM13; PR domain zinc finger protein 16; PR domain-containing protein 16; Transcription factor MEL1; MDS1/EVI1-like gene 1
Gene Symbol	PRDM16
Entrez Gene	63976(Human); 70673(Mouse)
SwissProt	Q9HAZ2(Human); A2A935(Mouse)

*AREX continuously optimizes our products. Webpage content may not reflect the latest updates. For inquiries, please contact info@arexbio.com or your local distributor.

*Clone Number, Reactivity, Source/Host and Clonality can be found in the product name and Key Features section above.

DATASHEET**PRDM16 Rabbit Polyclonal Antibody**

CAT. NO. APA18746

DATA

Western blot analysis of PRDM16 expression in 293 (A) whole cell lysates. (Predicted band size: 140 kD; Observed band size: 120 kD)

STORAGE

Store at 4°C short term. For long term storage, store at -20°C, avoiding freeze/thaw cycles.

NOTE

For Research Use Only. Not for diagnostic, therapeutics, prophylactic or in vivo use.