

DATASHEET

SBK1 Rabbit Polyclonal Antibody

CAT. NO. APA18753

KEY FEATURES

| | | | |
|---------------|---|---------------|---------------------|
| Target | SBK1 | Source / Host | Rabbit |
| Reactivity | Mouse | Clonality | Polyclonal |
| Applications | WB | Conjugation | Unconjugated |
| Form / Buffer | Liquid in 0.42% Potassium phosphate, 0.87% Sodium chloride, pH 7.3, 30% glycerol, and 0.01% sodium azide. | | Storage at -20°C |

BACKGROUND

Predicted to enable protein serine/threonine kinase activity. Predicted to be involved in chromatin remodeling. Predicted to be located in cytoplasm.

APPLICATION

To ensure optimal assay performance, AREX recommends conducting reagent titration tailored to each testing system for optimal detection results.

| | |
|----|----------------|
| WB | 1:500 - 1:1000 |
|----|----------------|

*Results are sample-specific. Please refer to your local assay conditions and test parameters for reference.

PRODUCT OVERVIEW

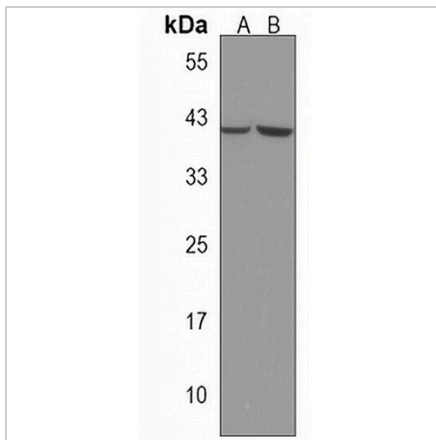
| | |
|-------------------|---|
| Description | Rabbit polyclonal antibody to SBK1 |
| Specificity | Recognizes endogenous levels of SBK1 protein. |
| Antibody Type | Primary antibody |
| Immunogen | KLH-conjugated synthetic peptide encompassing a sequence within the N-terminal region of human SBK1. The exact sequence is proprietary. |
| Purification | The antibody was purified by immunogen affinity chromatography. |
| Molecular Weight | Predicted: 45 kD; Observed: 40 kD |
| Form/Buffer | Liquid in 0.42% Potassium phosphate, 0.87% Sodium chloride, pH 7.3, 30% glycerol, and 0.01% sodium azide. |
| Alternative Names | Serine/threonine-protein kinase SBK1; SH3-binding kinase 1 |
| Gene Symbol | SBK1 |
| Entrez Gene | 104175(Mouse) |
| SwissProt | Q8QZX0(Mouse) |

*AREX continuously optimizes our products. Webpage content may not reflect the latest updates. For inquiries, please contact info@arexbio.com or your local distributor.

*Clone Number, Reactivity, Source/Host and Clonality can be found in the product name and Key Features section above.

DATASHEET**SBK1 Rabbit Polyclonal Antibody**

CAT. NO. APA18753

DATA

Western blot analysis of SBK1 expression in mouse heart (A), mouse brain (B) whole cell lysates. (Predicted band size: 45 kD; Observed band size: 40 kD)

STORAGE

Store at 4°C short term. For long term storage, store at -20°C, avoiding freeze/thaw cycles.

NOTE

For Research Use Only. Not for diagnostic, therapeutics, prophylactic or in vivo use.