

DATASHEET

SDAD1 Rabbit Polyclonal Antibody

CAT. NO. APA18762

KEY FEATURES

Target	SDAD1	Source / Host	Rabbit
Reactivity	Human, Mouse	Clonality	Polyclonal
Applications	WB	Conjugation	Unconjugated
Form / Buffer	Liquid in 0.42% Potassium phosphate, 0.87% Sodium chloride, pH 7.3, 30% glycerol, and 0.01% sodium azide.		Storage at -20°C

BACKGROUND

Required for 60S pre-ribosomal subunits export to the cytoplasm.

APPLICATION

To ensure optimal assay performance, AREX recommends conducting reagent titration tailored to each testing system for optimal detection results.

WB	1:500 - 1:1000
----	----------------

*Results are sample-specific. Please refer to your local assay conditions and test parameters for reference.

PRODUCT OVERVIEW

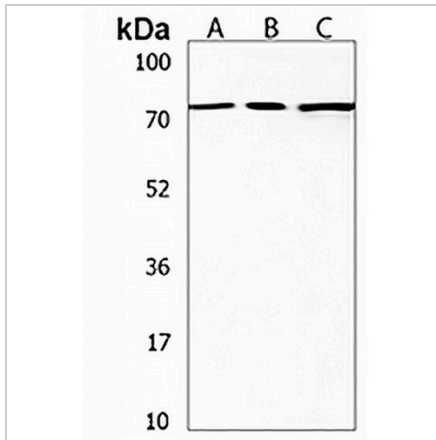
Description	Rabbit polyclonal antibody to SDAD1
Specificity	Recognizes endogenous levels of SDAD1 protein.
Antibody Type	Primary antibody
Immunogen	KLH-conjugated synthetic peptide encompassing a sequence within the C-terminal region of human SDAD1. The exact sequence is proprietary.
Purification	The antibody was purified by immunogen affinity chromatography.
Molecular Weight	Predicted: 79 kD; Observed: 70 kD
Form/Buffer	Liquid in 0.42% Potassium phosphate, 0.87% Sodium chloride, pH 7.3, 30% glycerol, and 0.01% sodium azide.
Alternative Names	NUC130; Protein SDA1 homolog; Nucleolar protein 130; SDA1 domain-containing protein 1; hSDA
Gene Symbol	SDAD1
Entrez Gene	55153(Human); 231452(Mouse)
SwissProt	Q9NVU7(Human); Q80UZ2(Mouse)

*AREX continuously optimizes our products. Webpage content may not reflect the latest updates. For inquiries, please contact info@arexbio.com or your local distributor.

*Clone Number, Reactivity, Source/Host and Clonality can be found in the product name and Key Features section above.

DATASHEET**SDAD1 Rabbit Polyclonal Antibody**

CAT. NO. APA18762

DATA

Western blot analysis of SDAD1 expression in K562 (A), human kidney (B), mouse spleen (C) whole cell lysates. (Predicted band size: 79 kD; Observed band size: 70 kD)

STORAGE

Store at 4°C short term. For long term storage, store at -20°C, avoiding freeze/thaw cycles.

NOTE

For Research Use Only. Not for diagnostic, therapeutics, prophylactic or in vivo use.