

DATASHEET

UBTFL1 Rabbit Polyclonal Antibody

CAT. NO. APA18766

KEY FEATURES

Target	UBTFL1	Source / Host	Rabbit
Reactivity	Mouse	Clonality	Polyclonal
Applications	WB	Conjugation	Unconjugated
Form / Buffer	Liquid in 0.42% Potassium phosphate, 0.87% Sodium chloride, pH 7.3, 30% glycerol, and 0.01% sodium azide.		Storage at-20°C

BACKGROUND

Predicted to enable RNA polymerase I core promoter sequence-specific DNA binding activity and RNA polymerase I general transcription initiation factor activity. Predicted to be involved in positive regulation of transcription by RNA polymerase I and transcription by RNA polymerase I. Predicted to act upstream of or within blastocyst growth; embryo implantation; and regulation of gene expression. Predicted to be located in cytoplasm and intracellular membrane-bounded organelle. Predicted to be active in nucleus.

APPLICATION

To ensure optimal assay performance, AREX recommends conducting reagent titration tailored to each testing system for optimal detection results.

WB	1:500 - 1:1000
----	----------------

*Results are sample-specific. Please refer to your local assay conditions and test parameters for reference.

PRODUCT OVERVIEW

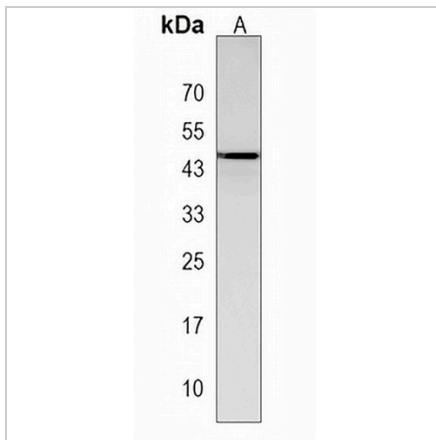
Description	Rabbit polyclonal antibody to UBTFL1
Specificity	Recognizes endogenous levels of UBTFL1 protein.
Antibody Type	Primary antibody
Immunogen	KLH-conjugated synthetic peptide encompassing a sequence within the Central region of human UBTFL1. The exact sequence is proprietary.
Purification	The antibody was purified by immunogen affinity chromatography.
Molecular Weight	Predicted: 46 kD; Observed: 46 kD
Form/Buffer	Liquid in 0.42% Potassium phosphate, 0.87% Sodium chloride, pH 7.3, 30% glycerol, and 0.01% sodium azide.
Alternative Names	C11orf27; Putative upstream-binding factor 1-like protein 1
Gene Symbol	UBTFL1
Entrez Gene	546118(Mouse)
SwissProt	Q3USZ2(Mouse)

*AREX continuously optimizes our products. Webpage content may not reflect the latest updates. For inquiries, please contact info@arexbio.com or your local distributor.

*Clone Number, Reactivity, Source/Host and Clonality can be found in the product name and Key Features section above.

DATASHEET**UBTFL1 Rabbit Polyclonal Antibody**

CAT. NO. APA18766

DATA

Western blot analysis of UBTFL1 expression in mouse liver (A) whole cell lysates.
(Predicted band size: 46 kD; Observed band size: 46 kD)

STORAGE

Store at 4°C short term. For long term storage, store at -20°C, avoiding freeze/thaw cycles.

NOTE

For Research Use Only. Not for diagnostic, therapeutics, prophylactic or in vivo use.