

DATASHEET

CXCL16 Rabbit Polyclonal Antibody

CAT. NO. APA18768

KEY FEATURES

Target	CXCL16	Source / Host	Rabbit
Reactivity	Human	Clonality	Polyclonal
Applications	WB	Conjugation	Unconjugated
Form / Buffer	Liquid in 0.42% Potassium phosphate, 0.87% Sodium chloride, pH 7.3, 30% glycerol, and 0.01% sodium azide.		Storage at-20°C

BACKGROUND

Acts as a scavenger receptor on macrophages, which specifically binds to OxLDL (oxidized low density lipoprotein), suggesting that it may be involved in pathophysiology such as atherogenesis . Induces a strong chemotactic response. Induces calcium mobilization. Binds to CXCR6/Bonzo.

APPLICATION

To ensure optimal assay performance, AREX recommends conducting reagent titration tailored to each testing system for optimal detection results.

WB	1:500 - 1:1000
----	----------------

*Results are sample-specific. Please refer to your local assay conditions and test parameters for reference.

PRODUCT OVERVIEW

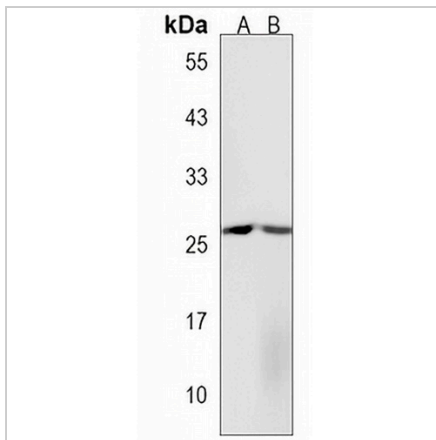
Description	Rabbit polyclonal antibody to CXCL16
Specificity	Recognizes endogenous levels of CXCL16 protein.
Antibody Type	Primary antibody
Immunogen	KLH-conjugated synthetic peptide encompassing a sequence within the Central region of human CXCL16. The exact sequence is proprietary.
Purification	The antibody was purified by immunogen affinity chromatography.
Molecular Weight	Predicted: 27 kD; Observed: 29 kD
Form/Buffer	Liquid in 0.42% Potassium phosphate, 0.87% Sodium chloride, pH 7.3, 30% glycerol, and 0.01% sodium azide.
Alternative Names	SCYB16; SRPSOX; C-X-C motif chemokine 16; Scavenger receptor for phosphatidylserine and oxidized low density lipoprotein; SR-PSOX; Small-inducible cytokine B16; Transmembrane chemokine CXCL16
Gene Symbol	CXCL16
Entrez Gene	58191(Human)
SwissProt	Q9H2A7(Human)

*AREX continuously optimizes our products. Webpage content may not reflect the latest updates. For inquiries, please contact info@arexbio.com or your local distributor.

*Clone Number, Reactivity, Source/Host and Clonality can be found in the product name and Key Features section above.

DATASHEET**CXCL16 Rabbit Polyclonal Antibody**

CAT. NO. APA18768

DATA

Western blot analysis of CXCL16 expression in human spleen (A), human lung (B) whole cell lysates. (Predicted band size: 27 kD; Observed band size: 29 kD)

STORAGE

Store at 4°C short term. For long term storage, store at -20°C, avoiding freeze/thaw cycles.

NOTE

For Research Use Only. Not for diagnostic, therapeutics, prophylactic or in vivo use.