

DATASHEET

ACSM5 Rabbit Polyclonal Antibody

CAT. NO. APA18769

KEY FEATURES

Target	ACSM5	Source / Host	Rabbit
Reactivity	Human, Mouse, Rat	Clonality	Polyclonal
Applications	WB	Conjugation	Unconjugated
Form / Buffer	Liquid in 0.42% Potassium phosphate, 0.87% Sodium chloride, pH 7.3, 30% glycerol, and 0.01% sodium azide.		Storage at -20°C

BACKGROUND

Catalyzes the activation of fatty acids by CoA to produce an acyl-CoA, the first step in fatty acid metabolism.

APPLICATION

To ensure optimal assay performance, AREX recommends conducting reagent titration tailored to each testing system for optimal detection results.

WB	1:500 - 1:1000
----	----------------

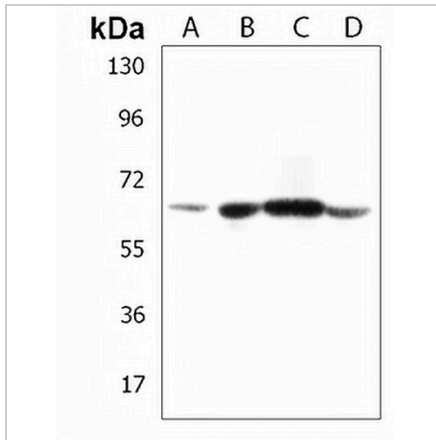
*Results are sample-specific. Please refer to your local assay conditions and test parameters for reference.

PRODUCT OVERVIEW

Description	Rabbit polyclonal antibody to ACSM5
Specificity	Recognizes endogenous levels of ACSM5 protein.
Antibody Type	Primary antibody
Immunogen	KLH-conjugated synthetic peptide encompassing a sequence within the C-terminal region of human ACSM5. The exact sequence is proprietary.
Purification	The antibody was purified by immunogen affinity chromatography.
Molecular Weight	Predicted: 64 kD; Observed: 65 kD
Form/Buffer	Liquid in 0.42% Potassium phosphate, 0.87% Sodium chloride, pH 7.3, 30% glycerol, and 0.01% sodium azide.
Alternative Names	MACS3; Acyl-coenzyme A synthetase ACSM5, mitochondrial; Acyl-CoA synthetase medium-chain family member 5
Gene Symbol	ACSM5
Entrez Gene	54988(Human); 272428(Mouse); 361637(Rat)
SwissProt	Q6NUN0(Human); Q8BGA8(Mouse); Q6AYT9(Rat)

*AREX continuously optimizes our products. Webpage content may not reflect the latest updates. For inquiries, please contact info@arexbio.com or your local distributor.

*Clone Number, Reactivity, Source/Host and Clonality can be found in the product name and Key Features section above.

DATASHEET**ACSM5 Rabbit Polyclonal Antibody****CAT. NO. APA18769****DATA**

Western blot analysis of ACSM5 expression in human kidney (A), mouse kidney (B), mouse liver (C), rat kidney (D) whole cell lysates. (Predicted band size: 64 kD; Observed band size: 65 kD)

STORAGE

Store at 4°C short term. For long term storage, store at -20°C, avoiding freeze/thaw cycles.

NOTE

For Research Use Only. Not for diagnostic, therapeutics, prophylactic or in vivo use.