

DATASHEET

SKOR2 Rabbit Polyclonal Antibody

CAT. NO. APA18771

KEY FEATURES

Target	SKOR2	Source / Host	Rabbit
Reactivity	Human, Mouse	Clonality	Polyclonal
Applications	WB, IF/ICC	Conjugation	Unconjugated
Form / Buffer	Liquid in 0.42% Potassium phosphate, 0.87% Sodium chloride, pH 7.3, 30% glycerol, and 0.01% sodium azide.		Storage at -20°C

BACKGROUND

Exhibits transcriptional repressor activity . Acts as a TGF-beta antagonist in the nervous system.

APPLICATION

To ensure optimal assay performance, AREX recommends conducting reagent titration tailored to each testing system for optimal detection results.

WB	1:500 - 1:1000
IF/ICC	1:50 - 1:100

*Results are sample-specific. Please refer to your local assay conditions and test parameters for reference.

PRODUCT OVERVIEW

Description	Rabbit polyclonal antibody to SKOR2
Specificity	Recognizes endogenous levels of SKOR2 protein.
Antibody Type	Primary antibody
Immunogen	KLH-conjugated synthetic peptide encompassing a sequence within the C-terminal region of human SKOR2. The exact sequence is proprietary.
Purification	The antibody was purified by immunogen affinity chromatography.
Molecular Weight	Predicted: 105 kD; Observed: 105 kD
Form/Buffer	Liquid in 0.42% Potassium phosphate, 0.87% Sodium chloride, pH 7.3, 30% glycerol, and 0.01% sodium azide.
Alternative Names	CORL2; FUSSEL18; SKI family transcriptional corepressor 2; Functional Smad-suppressing element on chromosome 18; Fussel-18; LBX1 corepressor 1-like protein; Ladybird homeobox corepressor 1-like protein
Gene Symbol	SKOR2
Entrez Gene	652991(Human); 664805(Mouse)
SwissProt	Q2VWA4(Human); A7M7C7(Mouse)

*AREX continuously optimizes our products. Webpage content may not reflect the latest updates. For inquiries, please contact info@arexbio.com or your local distributor.

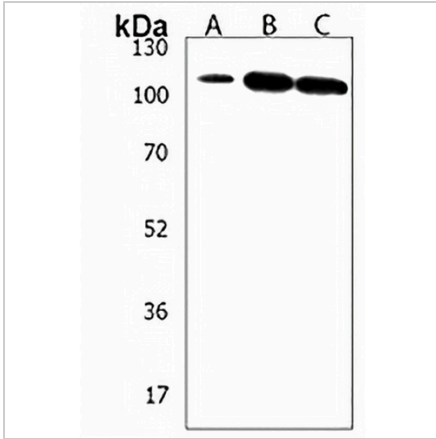
*Clone Number, Reactivity, Source/Host and Clonality can be found in the product name and Key Features section above.

DATASHEET

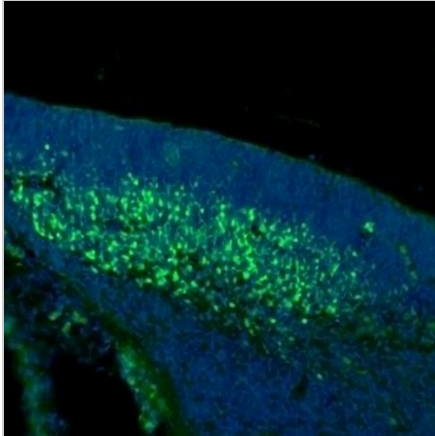
SKOR2 Rabbit Polyclonal Antibody

CAT. NO. APA18771

DATA



Western blot analysis of SKOR2 expression in human cerebellum (A), human testis (B), mouse cerebellum (C) whole cell lysates. (Predicted band size: 105 kD; Observed band size: 105 kD)



Immunofluorescent analysis of Anti-SKOR2 staining in mouse cerebellum cells. Formalin-fixed cells were permeabilized with 0.1% Triton X-100 in TBS for 5-10 minutes and blocked with 3% BSA-PBS for 30 minutes at room temperature. Cells were probed with the primary antibody in 3% BSA-PBS and incubated overnight at 4 °C in a humidified chamber. Cells were washed with PBST and incubated with a AREX® Fluor 488 - conjugated secondary antibody (green) in PBS at room temperature in the dark. DAPI was used to stain the cell nuclei (blue).

STORAGE

Store at 4°C short term. For long term storage, store at -20°C, avoiding freeze/thaw cycles.

NOTE

For Research Use Only. Not for diagnostic, therapeutics, prophylactic or in vivo use.