

**DATASHEET**

**B4GALT7 Rabbit Polyclonal Antibody**

CAT. NO. APA18791

**KEY FEATURES**

Target	B4GALT7	Source / Host	Rabbit
Reactivity	Human, Mouse	Clonality	Polyclonal
Applications	WB	Conjugation	Unconjugated
Form / Buffer	Liquid in 0.42% Potassium phosphate, 0.87% Sodium chloride, pH 7.3, 30% glycerol, and 0.01% sodium azide.		Storage at -20°C

**BACKGROUND**

Required for the biosynthesis of the tetrasaccharide linkage region of proteoglycans, especially for small proteoglycans in skin fibroblasts.

**APPLICATION**

To ensure optimal assay performance, AREX recommends conducting reagent titration tailored to each testing system for optimal detection results.

WB	1:500 - 1:1000
----	----------------

\*Results are sample-specific. Please refer to your local assay conditions and test parameters for reference.

**PRODUCT OVERVIEW**

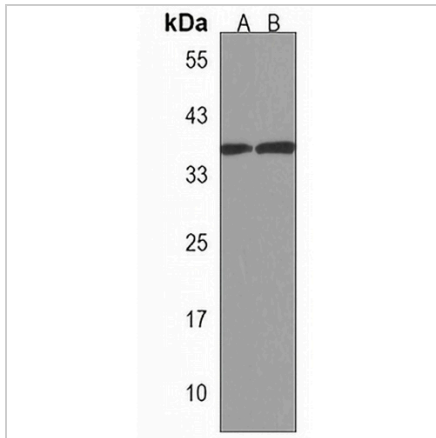
Description	Rabbit polyclonal antibody to B4GALT7
Specificity	Recognizes endogenous levels of B4GALT7 protein.
Antibody Type	Primary antibody
Immunogen	KLH-conjugated synthetic peptide encompassing a sequence within the C-terminal region of human B4GALT7. The exact sequence is proprietary.
Purification	The antibody was purified by immunogen affinity chromatography.
Molecular Weight	Predicted: 37 kD; Observed: 37 kD
Form/Buffer	Liquid in 0.42% Potassium phosphate, 0.87% Sodium chloride, pH 7.3, 30% glycerol, and 0.01% sodium azide.
Alternative Names	XGALT1; Beta-1,4-galactosyltransferase 7; Beta-1,4-GalTase 7; Beta4Gal-T7; b4Gal-T7; UDP-Gal:beta-GlcNAc beta-1,4-galactosyltransferase 7; UDP-galactose:beta-N-acetylglucosamine beta-1,4-galactosyltransferase 7
Gene Symbol	B4GALT7
Entrez Gene	11285(Human); 218271(Mouse)
SwissProt	Q9UBV7(Human); Q8R087(Mouse)

\*AREX continuously optimizes our products. Webpage content may not reflect the latest updates. For inquiries, please contact [info@arexbio.com](mailto:info@arexbio.com) or your local distributor.

\*Clone Number, Reactivity, Source/Host and Clonality can be found in the product name and Key Features section above.

**DATASHEET****B4GALT7 Rabbit Polyclonal Antibody**

CAT. NO. APA18791

**DATA**

Western blot analysis of B4GALT7 expression in human pancreas (A), mouse skeletal muscle (B) whole cell lysates. (Predicted band size: 37 kD; Observed band size: 37 kD)

**STORAGE**

Store at 4°C short term. For long term storage, store at -20°C, avoiding freeze/thaw cycles.

**NOTE**

For Research Use Only. Not for diagnostic, therapeutics, prophylactic or in vivo use.