

DATASHEET

NOTO Rabbit Polyclonal Antibody

CAT. NO. APA18793

KEY FEATURES

Target	NOTO	Source / Host	Rabbit
Reactivity	Mouse	Clonality	Polyclonal
Applications	WB	Conjugation	Unconjugated
Form / Buffer	Liquid in 0.42% Potassium phosphate, 0.87% Sodium chloride, pH 7.3, 30% glycerol, and 0.01% sodium azide.		Storage at -20°C

BACKGROUND

Enables sequence-specific double-stranded DNA binding activity. Predicted to be involved in brain development; neuron differentiation; and regulation of transcription by RNA polymerase II. Predicted to act upstream of or within several processes, including embryonic organ development; motile cilium assembly; and regulation of cilium assembly. Predicted to be located in chromatin. Predicted to be active in nucleus.

APPLICATION

To ensure optimal assay performance, AREX recommends conducting reagent titration tailored to each testing system for optimal detection results.

WB	1:500 - 1:1000
----	----------------

*Results are sample-specific. Please refer to your local assay conditions and test parameters for reference.

PRODUCT OVERVIEW

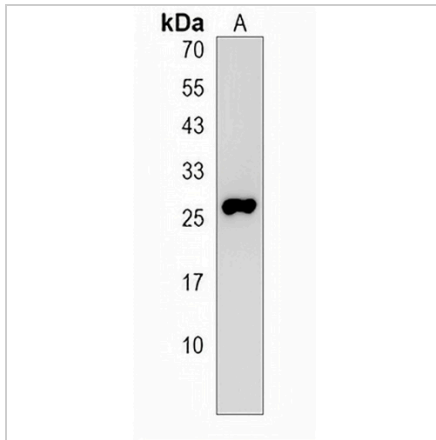
Description	Rabbit polyclonal antibody to NOTO
Specificity	Recognizes endogenous levels of NOTO protein.
Antibody Type	Primary antibody
Immunogen	KLH-conjugated synthetic peptide encompassing a sequence within the C-terminal region of human NOTO. The exact sequence is proprietary.
Purification	The antibody was purified by immunogen affinity chromatography.
Molecular Weight	Predicted: 26 kD; Observed: 26 kD
Form/Buffer	Liquid in 0.42% Potassium phosphate, 0.87% Sodium chloride, pH 7.3, 30% glycerol, and 0.01% sodium azide.
Alternative Names	Homeobox protein notochord
Gene Symbol	NOTO
Entrez Gene	384452(Mouse)
SwissProt	Q5TIS6(Mouse)

*AREX continuously optimizes our products. Webpage content may not reflect the latest updates. For inquiries, please contact info@arexbio.com or your local distributor.

*Clone Number, Reactivity, Source/Host and Clonality can be found in the product name and Key Features section above.

DATASHEET**NOTO Rabbit Polyclonal Antibody**

CAT. NO. APA18793

DATA

Western blot analysis of NOTO expression in mouse liver (A) whole cell lysates. (Predicted band size: 26 kD; Observed band size: 26 kD)

STORAGE

Store at 4°C short term. For long term storage, store at -20°C, avoiding freeze/thaw cycles.

NOTE

For Research Use Only. Not for diagnostic, therapeutics, prophylactic or in vivo use.