

## DATASHEET

# LRTOMT Rabbit Polyclonal Antibody

CAT. NO. APA18794

### KEY FEATURES

Target	LRTOMT	Source / Host	Rabbit
Reactivity	Human	Clonality	Polyclonal
Applications	WB	Conjugation	Unconjugated
Form / Buffer	Liquid in 0.42% Potassium phosphate, 0.87% Sodium chloride, pH 7.3, 30% glycerol, and 0.01% sodium azide.		Storage at -20°C

### BACKGROUND

Catalyzes the O-methylation, and thereby the inactivation, of catecholamine neurotransmitters and catechol hormones . Required for auditory function . Component of the cochlear hair cell's mechanotransduction (MET) machinery. Involved in the assembly of the asymmetric tip-link MET complex. Required for transportation of TMC1 and TMC2 proteins into the mechanically sensitive stereocilia of the hair cells. The function in MET is independent of the enzymatic activity .

### APPLICATION

To ensure optimal assay performance, AREX recommends conducting reagent titration tailored to each testing system for optimal detection results.

WB	1:1000 - 1:2000
----	-----------------

\*Results are sample-specific. Please refer to your local assay conditions and test parameters for reference.

### PRODUCT OVERVIEW

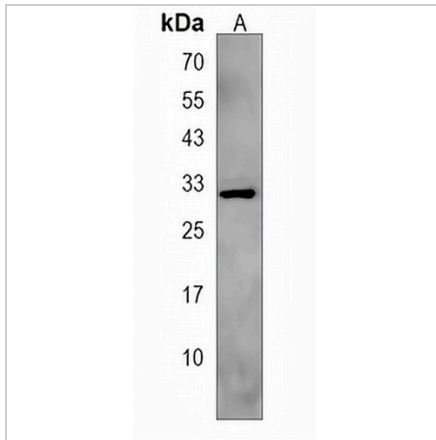
Description	Rabbit polyclonal antibody to LRTOMT
Specificity	Recognizes endogenous levels of LRTOMT protein.
Antibody Type	Primary antibody
Immunogen	KLH-conjugated synthetic peptide encompassing a sequence within the N-terminal region of human LRTOMT. The exact sequence is proprietary.
Purification	The antibody was purified by immunogen affinity chromatography.
Molecular Weight	Predicted: 32 kD; Observed: 32 kD
Form/Buffer	Liquid in 0.42% Potassium phosphate, 0.87% Sodium chloride, pH 7.3, 30% glycerol, and 0.01% sodium azide.
Alternative Names	COMT2; TOMT; Transmembrane O-methyltransferase; Catechol O-methyltransferase 2; Protein LRTOMT2
Gene Symbol	LRTOMT
Entrez Gene	220074(Human)
SwissProt	Q8WZ04(Human)

\*AREX continuously optimizes our products. Webpage content may not reflect the latest updates. For inquiries, please contact [info@arexbio.com](mailto:info@arexbio.com) or your local distributor.

\*Clone Number, Reactivity, Source/Host and Clonality can be found in the product name and Key Features section above.

**DATASHEET****LRTOMT Rabbit Polyclonal Antibody**

CAT. NO. APA18794

**DATA**

Western blot analysis of LRTOMT expression in human liver (A) whole cell lysates.  
(Predicted band size: 32 kD; Observed band size: 32 kD)

**STORAGE**

Store at 4°C short term. For long term storage, store at -20°C, avoiding freeze/thaw cycles.

**NOTE**

For Research Use Only. Not for diagnostic, therapeutics, prophylactic or in vivo use.