

DATASHEET

IL-24 Rabbit Polyclonal Antibody

CAT. NO. APA18805

KEY FEATURES

Target	IL-24	Source / Host	Rabbit
Reactivity	Human	Clonality	Polyclonal
Applications	WB, IHC, FC	Conjugation	Unconjugated
Form / Buffer	Liquid in 0.42% Potassium phosphate, 0.87% Sodium chloride, pH 7.3, 30% glycerol, and 0.01% sodium azide.		Storage at -20°C

BACKGROUND

Multifunctional cytokine mainly produced by T-cells that plays a regulatory role in immune response, tissue homeostasis, host defense, and oncogenesis . Possesses antiviral functions and induces the type I interferon response during influenza infection . Signals through two receptor complexes IL20RA/IL20RB or IL20RB/IL22RA1 . In turn, stimulates the JAK1-STAT3 and MAPK pathways and promotes the secretion of pro-inflammatory mediators including IL8 and MMP1 . Intracellularly, maintains endoplasmic reticulum homeostasis by restricting the eIF2alpha-CHOP pathway-mediated stress signal . In addition, acts as a quality control mechanism for the ubiquitin proteasome system by alerting the cell to proteasome dysfunction through activation of PKR/EIF2AK2 .

APPLICATION

To ensure optimal assay performance, AREX recommends conducting reagent titration tailored to each testing system for optimal detection results.

WB	1:500 - 1:1000
IHC	1:50 - 1:200
FC	1:10 - 1:30

*Results are sample-specific. Please refer to your local assay conditions and test parameters for reference.

PRODUCT OVERVIEW

Description	Rabbit polyclonal antibody to IL-24
Specificity	Recognizes endogenous levels of IL-24 protein.
Antibody Type	Primary antibody
Immunogen	Recombinant fusion protein of human IL-24. The exact sequence is proprietary.
Purification	The antibody was purified by immunogen affinity chromatography.
Molecular Weight	Predicted: 23 kD; Observed: 24 kD
Form/Buffer	Liquid in 0.42% Potassium phosphate, 0.87% Sodium chloride, pH 7.3, 30% glycerol, and 0.01% sodium azide.
Alternative Names	MDA7; ST16; Interleukin-24; IL-24; Melanoma differentiation-associated gene 7 protein; MDA-7; Suppression of tumorigenicity 16 protein
Gene Symbol	IL24
Entrez Gene	11009(Human)
SwissProt	Q13007(Human)

*AREX continuously optimizes our products. Webpage content may not reflect the latest updates. For inquiries, please contact info@arex.bio or your local distributor.

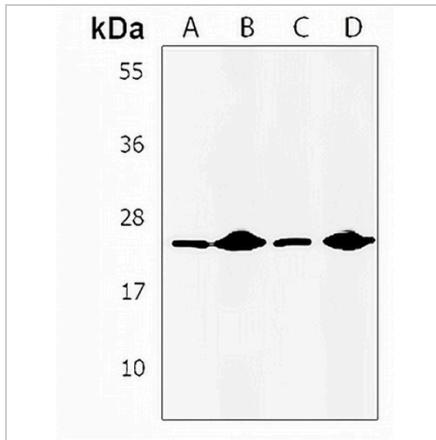
*Clone Number, Reactivity, Source/Host and Clonality can be found in the product name and Key Features section above.

DATASHEET

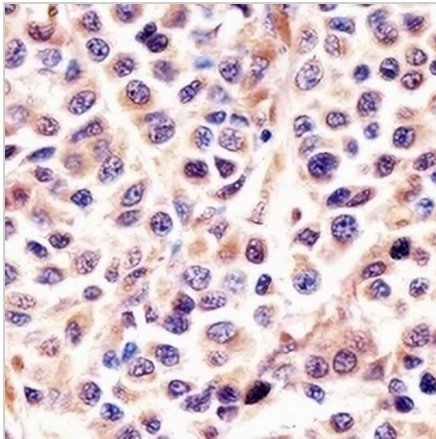
IL-24 Rabbit Polyclonal Antibody

CAT. NO. APA18805

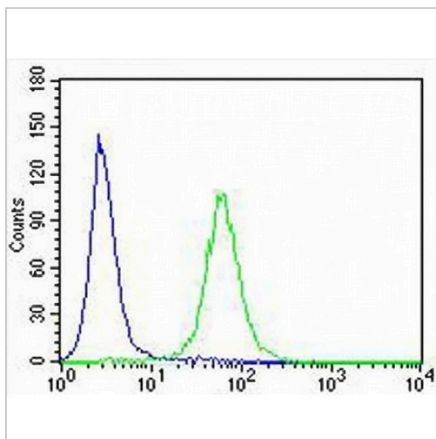
DATA



Western blot analysis of IL-24 expression in HeLa (A), Jurkat (B), K562 (C), A431 (D) whole cell lysates. (Predicted band size: 23 kD; Observed band size: 24 kD)



Immunohistochemical analysis of IL-24 staining in human melanoma formalin fixed paraffin embedded tissue section. The section was pre-treated using heat mediated antigen retrieval with sodium citrate buffer (pH 6.0). The section was then incubated with the antibody at room temperature and detected using an HRP conjugated compact polymer system. DAB was used as the chromogen. The section was then counterstained with haematoxylin and mounted with DPX.



Flow cytometric analysis of U2OS cells using Anti-IL-24 Antibody. The cells were fixed with 2% paraformaldehyde (10 min) and then permeabilized with 90% methanol for 10 min. The cells were incubated in 2% bovine serum albumin to block non-specific protein-protein interactions followed by the antibody at 37 °C for 60 min. The secondary antibody Goat Anti-Rabbit IgG (H&L) - AREX® Fluor 488 was incubated at 37 °C for 40 min. Isotype control antibody (blue line) was used under the same condition.

STORAGE

Store at 4°C short term. For long term storage, store at -20°C, avoiding freeze/thaw cycles.

NOTE

For Research Use Only. Not for diagnostic, therapeutics, prophylactic or in vivo use.