

DATASHEET

MFSD6L Rabbit Polyclonal Antibody

CAT. NO. APA18807

KEY FEATURES

Target	MFSD6L	Source / Host	Rabbit
Reactivity	Human	Clonality	Polyclonal
Applications	WB	Conjugation	Unconjugated
Form / Buffer	Liquid in 0.42% Potassium phosphate, 0.87% Sodium chloride, pH 7.3, 30% glycerol, and 0.01% sodium azide.		Storage at -20°C

BACKGROUND

Major facilitator superfamily domain-containing protein 6-like (MFSD6L). Belongs to the major facilitator superfamily. MFSD6 family Subcellular location: Membrane

APPLICATION

To ensure optimal assay performance, AREX recommends conducting reagent titration tailored to each testing system for optimal detection results.

WB	1:500 - 1:1000
----	----------------

*Results are sample-specific. Please refer to your local assay conditions and test parameters for reference.

PRODUCT OVERVIEW

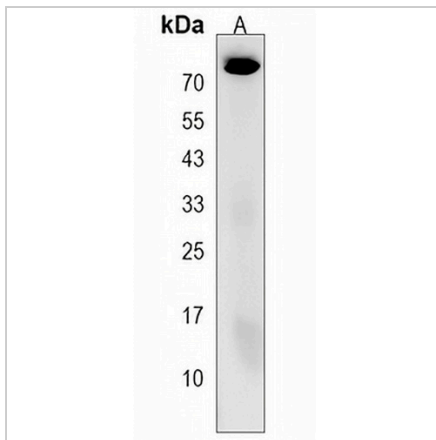
Description	Rabbit polyclonal antibody to MFSD6L
Specificity	Recognizes endogenous levels of MFSD6L protein.
Antibody Type	Primary antibody
Immunogen	KLH-conjugated synthetic peptide encompassing a sequence within the N-terminal region of human MFSD6L. The exact sequence is proprietary.
Purification	The antibody was purified by immunogen affinity chromatography.
Molecular Weight	Predicted: 64 kD; Observed: 72 kD
Form/Buffer	Liquid in 0.42% Potassium phosphate, 0.87% Sodium chloride, pH 7.3, 30% glycerol, and 0.01% sodium azide.
Alternative Names	Major facilitator superfamily domain-containing protein 6-like
Gene Symbol	MFSD6L
Entrez Gene	162387(Human)
SwissProt	Q8IWD5(Human)

*AREX continuously optimizes our products. Webpage content may not reflect the latest updates. For inquiries, please contact info@arexbio.com or your local distributor.

*Clone Number, Reactivity, Source/Host and Clonality can be found in the product name and Key Features section above.

DATASHEET**MFSD6L Rabbit Polyclonal Antibody**

CAT. NO. APA18807

DATA

Western blot analysis of MFSD6L expression in human testis (A) whole cell lysates.
(Predicted band size: 64 kD; Observed band size: 72 kD)

STORAGE

Store at 4°C short term. For long term storage, store at -20°C, avoiding freeze/thaw cycles.

NOTE

For Research Use Only. Not for diagnostic, therapeutics, prophylactic or in vivo use.