

**DATASHEET**

**CHST4 Rabbit Polyclonal Antibody**

CAT. NO. APA18814

**KEY FEATURES**

Target	CHST4	Source / Host	Rabbit
Reactivity	Human	Clonality	Polyclonal
Applications	WB	Conjugation	Unconjugated
Form / Buffer	Liquid in 0.42% Potassium phosphate, 0.87% Sodium chloride, pH 7.3, 30% glycerol, and 0.01% sodium azide.		Storage at -20°C

**BACKGROUND**

Sulfotransferase involved in SELL/L-selectin ligand biosynthesis pathway. Catalyzes the transfer of the sulfate group from 3'-phospho-5'-adenyl sulfate (PAPS) onto the hydroxyl group at C-6 position of the non-reducing N-acetylglucosamine (GlcNAc) residue within O-linked mucin-type glycans. Contributes to generate sialyl 6-sulfo Lewis X determinant (also known as MECA-79 epitope) for SELL recognition, a prerequisite for continuous lymphocyte homing into peripheral lymph nodes and antigen immune surveillance onto the hydroxyl group at C-6 position of the non-reducing N-acetylglucosamine (GlcNAc) residue within O-linked mucin-type glycans.

**APPLICATION**

To ensure optimal assay performance, AREX recommends conducting reagent titration tailored to each testing system for optimal detection results.

WB	1:500 - 1:1000
----	----------------

\*Results are sample-specific. Please refer to your local assay conditions and test parameters for reference.

**PRODUCT OVERVIEW**

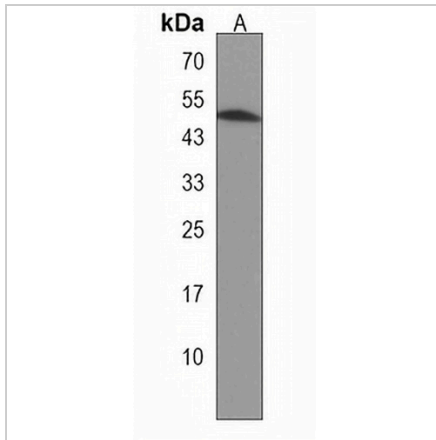
Description	Rabbit polyclonal antibody to CHST4
Specificity	Recognizes endogenous levels of CHST4 protein.
Antibody Type	Primary antibody
Immunogen	KLH-conjugated synthetic peptide encompassing a sequence within the C-terminal region of human CHST4. The exact sequence is proprietary.
Purification	The antibody was purified by immunogen affinity chromatography.
Molecular Weight	Predicted: 45 kD; Observed: 45 kD
Form/Buffer	Liquid in 0.42% Potassium phosphate, 0.87% Sodium chloride, pH 7.3, 30% glycerol, and 0.01% sodium azide.
Alternative Names	Carbohydrate sulfotransferase 4; Galactose/N-acetylglucosamine/N-acetylglucosamine 6-O-sulfotransferase 3; GST-3; High endothelial cells N-acetylglucosamine 6-O-sulfotransferase; HEC-GlcNAc6ST; L-selectin ligand sulfotransferase; LSST; N-acetylglucosamine 6-O-sulfotransferase 2; GlcNAc6ST-2; Gn6st-2
Gene Symbol	CHST4
Entrez Gene	10164(Human)
SwissProt	Q8NCG5(Human)

\*AREX continuously optimizes our products. Webpage content may not reflect the latest updates. For inquiries, please contact [info@arexbio.com](mailto:info@arexbio.com) or your local distributor.

\*Clone Number, Reactivity, Source/Host and Clonality can be found in the product name and Key Features section above.

**DATASHEET****CHST4 Rabbit Polyclonal Antibody**

CAT. NO. APA18814

**DATA**

Western blot analysis of CHST4 expression in HeLa (A) whole cell lysates. (Predicted band size: 45 kD; Observed band size: 45 kD)

**STORAGE**

Store at 4°C short term. For long term storage, store at -20°C, avoiding freeze/thaw cycles.

**NOTE**

For Research Use Only. Not for diagnostic, therapeutics, prophylactic or in vivo use.