

DATASHEET

UTF1 Rabbit Polyclonal Antibody

CAT. NO. APA18815

KEY FEATURES

| | | | |
|---------------|---|---------------|--------------------|
| Target | UTF1 | Source / Host | Rabbit |
| Reactivity | Mouse | Clonality | Polyclonal |
| Applications | WB | Conjugation | Unconjugated |
| Form / Buffer | Liquid in 0.42% Potassium phosphate, 0.87% Sodium chloride, pH 7.3, 30% glycerol, and 0.01% sodium azide. | | Storage at-20°C |

BACKGROUND

The protein encoded by this gene is a leucine zipper-containing transcriptional coactivator that may link the upstream activator ATF2 with the basal transcription complex. The encoded protein is closely associated with chromatin and is required for the proper differentiation of embryonic carcinoma and embryonic stem cells. Found nearly exclusively in pluripotent cells, this protein can also serve as a transcriptional repressor.

APPLICATION

To ensure optimal assay performance, AREX recommends conducting reagent titration tailored to each testing system for optimal detection results.

| | |
|----|----------------|
| WB | 1:500 - 1:1000 |
|----|----------------|

*Results are sample-specific. Please refer to your local assay conditions and test parameters for reference.

PRODUCT OVERVIEW

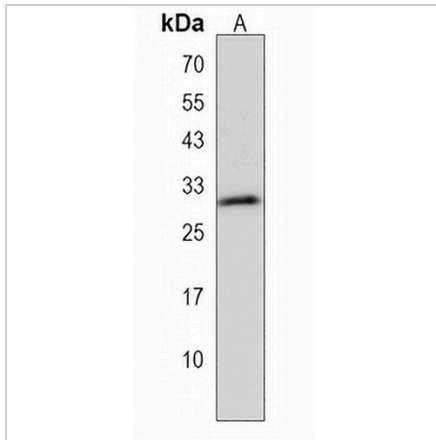
| | |
|-------------------|---|
| Description | Rabbit polyclonal antibody to UTF1 |
| Specificity | Recognizes endogenous levels of UTF1 protein. |
| Antibody Type | Primary antibody |
| Immunogen | KLH-conjugated synthetic peptide encompassing a sequence within the C-terminal region of human UTF1. The exact sequence is proprietary. |
| Purification | The antibody was purified by immunogen affinity chromatography. |
| Molecular Weight | Predicted: 36 kD; Observed: 30 kD |
| Form/Buffer | Liquid in 0.42% Potassium phosphate, 0.87% Sodium chloride, pH 7.3, 30% glycerol, and 0.01% sodium azide. |
| Alternative Names | Undifferentiated embryonic cell transcription factor 1 |
| Gene Symbol | UTF1 |
| Entrez Gene | 22286(Mouse) |
| SwissProt | Q6J1H4(Mouse) |

*AREX continuously optimizes our products. Webpage content may not reflect the latest updates. For inquiries, please contact info@arexbio.com or your local distributor.

*Clone Number, Reactivity, Source/Host and Clonality can be found in the product name and Key Features section above.

DATASHEET**UTF1 Rabbit Polyclonal Antibody**

CAT. NO. APA18815

DATA

Western blot analysis of UTF1 expression in mouse testis (A) whole cell lysates. (Predicted band size: 36 kD; Observed band size: 30 kD)

STORAGE

Store at 4°C short term. For long term storage, store at -20°C, avoiding freeze/thaw cycles.

NOTE

For Research Use Only. Not for diagnostic, therapeutics, prophylactic or in vivo use.