

DATASHEET

CD191 Rabbit Polyclonal Antibody

CAT. NO. APA18816

KEY FEATURES

Target	CD191	Source / Host	Rabbit
Reactivity	Human	Clonality	Polyclonal
Applications	WB	Conjugation	Unconjugated
Form / Buffer	Liquid in 0.42% Potassium phosphate, 0.87% Sodium chloride, pH 7.3, 30% glycerol, and 0.01% sodium azide.		Storage at-20°C

BACKGROUND

Chemokine receptor that plays a crucial role in regulating immune cell migration, inflammation, and immune responses . Contributes to the inflammatory response by recruiting immune cells, such as monocytes, macrophages, T-cells, and dendritic cells, to sites of inflammation for the clearance of pathogens and the resolution of tissue damage. When activated by its ligands including CCL3, CCL5-9, CCL13-16 and CCL23, triggers a signaling cascade within immune cells, leading to their migration towards the source of the chemokine . For example, mediates neutrophil migration after activation by CCL3 leading to the sequential release of TNF and leukotriene B4 . Also mediates monocyte migration upon CXCL4 binding .

APPLICATION

To ensure optimal assay performance, AREX recommends conducting reagent titration tailored to each testing system for optimal detection results.

WB	1:500 - 1:1000
----	----------------

*Results are sample-specific. Please refer to your local assay conditions and test parameters for reference.

PRODUCT OVERVIEW

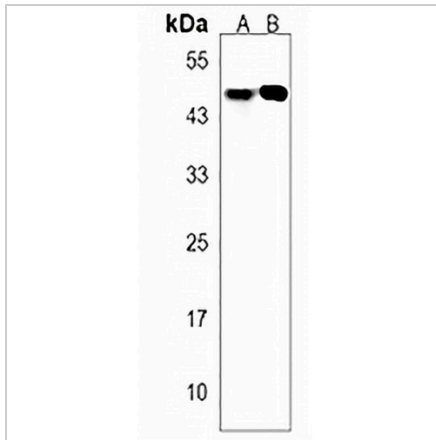
Description	Rabbit polyclonal antibody to CD191
Specificity	Recognizes endogenous levels of CD191 protein.
Antibody Type	Primary antibody
Immunogen	KLH-conjugated synthetic peptide encompassing a sequence within the N-terminal region of human CD191. The exact sequence is proprietary.
Purification	The antibody was purified by immunogen affinity chromatography.
Molecular Weight	Predicted: 41 kD; Observed: 48 kD
Form/Buffer	Liquid in 0.42% Potassium phosphate, 0.87% Sodium chloride, pH 7.3, 30% glycerol, and 0.01% sodium azide.
Alternative Names	CMKBR1; CMKR1; SCYAR1; C-C chemokine receptor type 1; C-C CKR-1; CC-CKR-1; CCR-1; CCR1; HM145; LD78 receptor; Macrophage inflammatory protein 1-alpha receptor; MIP-1alpha-R; RANTES-R; CD191
Gene Symbol	CCR1
Entrez Gene	1230(Human)
SwissProt	P32246(Human)

*AREX continuously optimizes our products. Webpage content may not reflect the latest updates. For inquiries, please contact info@arexbio.com or your local distributor.

*Clone Number, Reactivity, Source/Host and Clonality can be found in the product name and Key Features section above.

DATASHEET**CD191 Rabbit Polyclonal Antibody**

CAT. NO. APA18816

DATA

Western blot analysis of CD191 expression in A375 (A), Jurkat (B) whole cell lysates.
(Predicted band size: 41 kD; Observed band size: 48 kD)

STORAGE

Store at 4°C short term. For long term storage, store at -20°C, avoiding freeze/thaw cycles.

NOTE

For Research Use Only. Not for diagnostic, therapeutics, prophylactic or in vivo use.