

DATASHEET

PYCRL Rabbit Polyclonal Antibody

CAT. NO. APA18820

KEY FEATURES

Target	PYCRL	Source / Host	Rabbit
Reactivity	Human	Clonality	Polyclonal
Applications	WB	Conjugation	Unconjugated
Form / Buffer	Liquid in 0.42% Potassium phosphate, 0.87% Sodium chloride, pH 7.3, 30% glycerol, and 0.01% sodium azide.		Storage at -20°C

BACKGROUND

Oxidoreductase that catalyzes the last step in proline biosynthesis, which corresponds to the reduction of pyrroline-5-carboxylate (P5C) to L-proline using NAD(P)H to L-proline using NAD(P)H . Proline is synthesized from either glutamate or ornithine; both are converted to P5C, and then to proline via pyrroline-5-carboxylate reductases (PYCRs) . PYCR3 is exclusively linked to the biosynthesis of proline from ornithine .

APPLICATION

To ensure optimal assay performance, AREX recommends conducting reagent titration tailored to each testing system for optimal detection results.

WB	1:500 - 1:1000
----	----------------

*Results are sample-specific. Please refer to your local assay conditions and test parameters for reference.

PRODUCT OVERVIEW

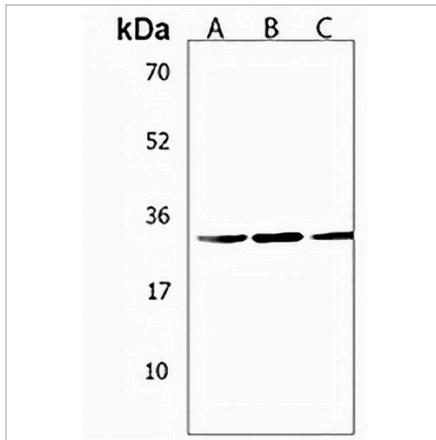
Description	Rabbit polyclonal antibody to PYCRL
Specificity	Recognizes endogenous levels of PYCRL protein.
Antibody Type	Primary antibody
Immunogen	KLH-conjugated synthetic peptide encompassing a sequence within the C-terminal region of human PYCRL. The exact sequence is proprietary.
Purification	The antibody was purified by immunogen affinity chromatography.
Molecular Weight	Predicted: 28 kD; Observed: 32 kD
Form/Buffer	Liquid in 0.42% Potassium phosphate, 0.87% Sodium chloride, pH 7.3, 30% glycerol, and 0.01% sodium azide.
Alternative Names	Pyrroline-5-carboxylate reductase 3; P5C reductase 3; P5CR 3; Pyrroline-5-carboxylate reductase-like protein
Gene Symbol	PYCRL
Entrez Gene	65263(Human)
SwissProt	Q53H96(Human)

*AREX continuously optimizes our products. Webpage content may not reflect the latest updates. For inquiries, please contact info@arexbio.com or your local distributor.

*Clone Number, Reactivity, Source/Host and Clonality can be found in the product name and Key Features section above.

DATASHEET**PYCRL Rabbit Polyclonal Antibody**

CAT. NO. APA18820

DATA**STORAGE**

Store at 4°C short term. For long term storage, store at -20°C, avoiding freeze/thaw cycles.

NOTE

For Research Use Only. Not for diagnostic, therapeutics, prophylactic or in vivo use.