

**DATASHEET**

**HOP Rabbit Polyclonal Antibody**

CAT. NO. APA18821

**KEY FEATURES**

Target	HOP	Source / Host	Rabbit
Reactivity	Human, Mouse, Rat	Clonality	Polyclonal
Applications	WB, IHC	Conjugation	Unconjugated
Form / Buffer	Liquid in 0.42% Potassium phosphate, 0.87% Sodium chloride, pH 7.3, 30% glycerol, and 0.01% sodium azide.		Storage at-20°C

**BACKGROUND**

Atypical homeodomain protein which does not bind DNA and is required to modulate cardiac growth and development. Acts via its interaction with SRF, thereby modulating the expression of SRF-dependent cardiac-specific genes and cardiac development. Prevents SRF-dependent transcription either by inhibiting SRF binding to DNA or by recruiting histone deacetylase (HDAC) proteins that prevent transcription by SRF. Overexpression causes cardiac hypertrophy . May act as a tumor suppressor. Acts as a co-chaperone for HSPA1A and HSPA1B chaperone proteins and assists in chaperone-mediated protein refolding proteins that prevent transcription by SRF. Overexpression causes cardiac hypertrophy . May act as a tumor suppressor.

**APPLICATION**

To ensure optimal assay performance, AREX recommends conducting reagent titration tailored to each testing system for optimal detection results.

WB	1:500 - 1:1000
IHC	1:50 - 1:200

\*Results are sample-specific. Please refer to your local assay conditions and test parameters for reference.

**PRODUCT OVERVIEW**

Description	Rabbit polyclonal antibody to HOP
Specificity	Recognizes endogenous levels of HOP protein.
Antibody Type	Primary antibody
Immunogen	KLH-conjugated synthetic peptide encompassing a sequence within the Central region of human HOP. The exact sequence is proprietary.
Purification	The antibody was purified by immunogen affinity chromatography.
Molecular Weight	Predicted: 8 kD; Observed: 11 kD
Form/Buffer	Liquid in 0.42% Potassium phosphate, 0.87% Sodium chloride, pH 7.3, 30% glycerol, and 0.01% sodium azide.
Alternative Names	HOD; HOP; LAGY; NECC1; OB1; Homeodomain-only protein; Lung cancer-associated Y protein; Not expressed in choriocarcinoma protein 1; Odd homeobox protein 1
Gene Symbol	HOPX
Entrez Gene	84525(Human); 74318(Mouse); 171160(Rat)
SwissProt	Q9BPY8(Human); Q8R1H0(Mouse); Q78ZR5(Rat)

\*AREX continuously optimizes our products. Webpage content may not reflect the latest updates. For inquiries, please contact [info@arexbio.com](mailto:info@arexbio.com) or your local distributor.

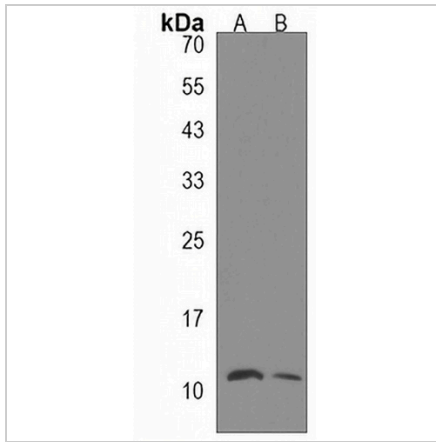
\*Clone Number, Reactivity, Source/Host and Clonality can be found in the product name and Key Features section above.

**DATASHEET**

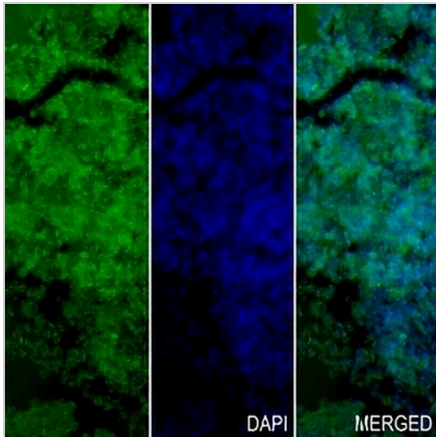
**HOP Rabbit Polyclonal Antibody**

CAT. NO. APA18821

**DATA**



Western blot analysis of HOP expression in mouse lung (A), rat lung (B) whole cell lysates. (Predicted band size: 8 kD; Observed band size: 11 kD)



Immunohistochemical analysis of HOP staining in human tonsil formalin fixed paraffin embedded tissue section. The section was pre-treated using heat mediated antigen retrieval with sodium citrate buffer (pH 6.0). The section was then incubated with the antibody at room temperature and detected using an HRP conjugated compact polymer system. Tyramide-AREX® Fluor 488 (green) was used as the chromogen. The section was then counterstained with DAPI (blue).

**STORAGE**

Store at 4°C short term. For long term storage, store at -20°C, avoiding freeze/thaw cycles.

**NOTE**

For Research Use Only. Not for diagnostic, therapeutics, prophylactic or in vivo use.