

DATASHEET

RYBP Rabbit Polyclonal Antibody

CAT. NO. APA18822

KEY FEATURES

Target	RYBP	Source / Host	Rabbit
Reactivity	Mouse	Clonality	Polyclonal
Applications	WB	Conjugation	Unconjugated
Form / Buffer	Liquid in 0.42% Potassium phosphate, 0.87% Sodium chloride, pH 7.3, 30% glycerol, and 0.01% sodium azide.		Storage at -20°C

BACKGROUND

Enables nucleic acid binding activity. Involved in chromatin remodeling; positive regulation of apoptotic process; and regulation of primary metabolic process. Located in nucleoplasm. Part of PcG protein complex.

APPLICATION

To ensure optimal assay performance, AREX recommends conducting reagent titration tailored to each testing system for optimal detection results.

WB	1:500 - 1:1000
----	----------------

*Results are sample-specific. Please refer to your local assay conditions and test parameters for reference.

PRODUCT OVERVIEW

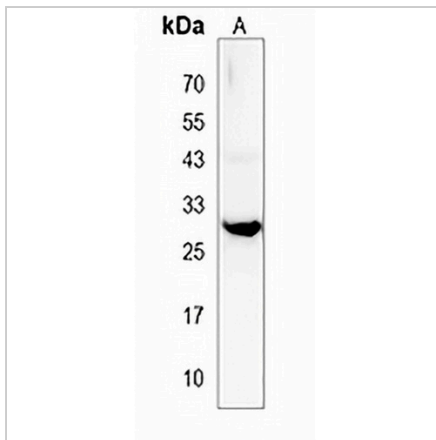
Description	Rabbit polyclonal antibody to RYBP
Specificity	Recognizes endogenous levels of RYBP protein.
Antibody Type	Primary antibody
Immunogen	KLH-conjugated synthetic peptide encompassing a sequence within the Central region of human RYBP. The exact sequence is proprietary.
Purification	The antibody was purified by immunogen affinity chromatography.
Molecular Weight	Predicted: 24 kD; Observed: 32 kD
Form/Buffer	Liquid in 0.42% Potassium phosphate, 0.87% Sodium chloride, pH 7.3, 30% glycerol, and 0.01% sodium azide.
Alternative Names	DEDAF; YEAF1; RING1 and YY1-binding protein; Apoptin-associating protein 1; APAP-1; Death effector domain-associated factor; DED-associated factor; YY1 and E4TF1-associated factor 1
Gene Symbol	RYBP
Entrez Gene	56353(Mouse)
SwissProt	Q8CCI5(Mouse)

*AREX continuously optimizes our products. Webpage content may not reflect the latest updates. For inquiries, please contact info@arexbio.com or your local distributor.

*Clone Number, Reactivity, Source/Host and Clonality can be found in the product name and Key Features section above.

DATASHEET**RYBP Rabbit Polyclonal Antibody**

CAT. NO. APA18822

DATA

Western blot analysis of RYBP expression in NIH3T3 (A) whole cell lysates. (Predicted band size: 24 kD; Observed band size: 32 kD)

STORAGE

Store at 4°C short term. For long term storage, store at -20°C, avoiding freeze/thaw cycles.

NOTE

For Research Use Only. Not for diagnostic, therapeutics, prophylactic or in vivo use.