

**DATASHEET**

**PLET1 Rabbit Polyclonal Antibody**

CAT. NO. APA18830

**KEY FEATURES**

Target	PLET1	Source / Host	Rabbit
Reactivity	Mouse	Clonality	Polyclonal
Applications	WB	Conjugation	Unconjugated
Form / Buffer	Liquid in 0.42% Potassium phosphate, 0.87% Sodium chloride, pH 7.3, 30% glycerol, and 0.01% sodium azide.		Storage at-20°C

**BACKGROUND**

Predicted to be involved in negative regulation of cell-matrix adhesion; positive regulation of cell migration; and wound healing, spreading of epidermal cells. Predicted to be located in extracellular region and plasma membrane. Predicted to be active in apical plasma membrane and external side of plasma membrane.

**APPLICATION**

To ensure optimal assay performance, AREX recommends conducting reagent titration tailored to each testing system for optimal detection results.

WB	1:500 - 1:1000
----	----------------

\*Results are sample-specific. Please refer to your local assay conditions and test parameters for reference.

**PRODUCT OVERVIEW**

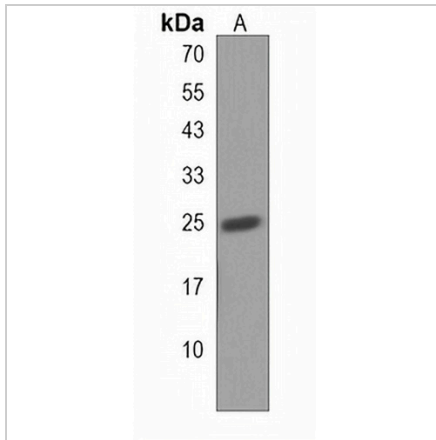
Description	Rabbit polyclonal antibody to PLET1
Specificity	Recognizes endogenous levels of PLET1 protein.
Antibody Type	Primary antibody
Immunogen	KLH-conjugated synthetic peptide encompassing a sequence within the Central region of human PLET1. The exact sequence is proprietary.
Purification	The antibody was purified by immunogen affinity chromatography.
Molecular Weight	Predicted: 25 kD; Observed: 26 kD
Form/Buffer	Liquid in 0.42% Potassium phosphate, 0.87% Sodium chloride, pH 7.3, 30% glycerol, and 0.01% sodium azide.
Alternative Names	C11orf34; Placenta-expressed transcript 1 protein
Gene Symbol	PLET1
Entrez Gene	76509(Mouse)
SwissProt	Q8VEN2(Mouse)

\*AREX continuously optimizes our products. Webpage content may not reflect the latest updates. For inquiries, please contact [info@arexbio.com](mailto:info@arexbio.com) or your local distributor.

\*Clone Number, Reactivity, Source/Host and Clonality can be found in the product name and Key Features section above.

**DATASHEET****PLET1 Rabbit Polyclonal Antibody**

CAT. NO. APA18830

**DATA**

Western blot analysis of PLET1 expression in mouse pancreas (A) whole cell lysates.  
(Predicted band size: 25 kD; Observed band size: 26 kD)

**STORAGE**

Store at 4°C short term. For long term storage, store at -20°C, avoiding freeze/thaw cycles.

**NOTE**

For Research Use Only. Not for diagnostic, therapeutics, prophylactic or in vivo use.