

DATASHEET

DIP2A Rabbit Polyclonal Antibody

CAT. NO. APA18833

KEY FEATURES

Target	DIP2A	Source / Host	Rabbit
Reactivity	Human	Clonality	Polyclonal
Applications	WB	Conjugation	Unconjugated
Form / Buffer	Liquid in 0.42% Potassium phosphate, 0.87% Sodium chloride, pH 7.3, 30% glycerol, and 0.01% sodium azide.		Storage at -20°C

BACKGROUND

Catalyzes the de novo synthesis of acetyl-CoA in vitro . Promotes acetylation of CTTN, possibly by providing the acetyl donor, ensuring correct dendritic spine morphology and synaptic transmission . Binds to follistatin-related protein FSTL1 and may act as a cell surface receptor for FSTL1, contributing to AKT activation and subsequent FSTL1-induced survival and function of endothelial cells and cardiac myocytes .

APPLICATION

To ensure optimal assay performance, AREX recommends conducting reagent titration tailored to each testing system for optimal detection results.

WB	1:500 - 1:1000
----	----------------

*Results are sample-specific. Please refer to your local assay conditions and test parameters for reference.

PRODUCT OVERVIEW

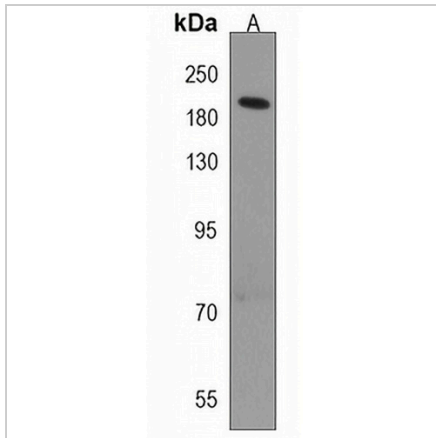
Description	Rabbit polyclonal antibody to DIP2A
Specificity	Recognizes endogenous levels of DIP2A protein.
Antibody Type	Primary antibody
Immunogen	KLH-conjugated synthetic peptide encompassing a sequence within the Central region of human DIP2A. The exact sequence is proprietary.
Purification	The antibody was purified by immunogen affinity chromatography.
Molecular Weight	Predicted: 170 kD; Observed: 200 kD
Form/Buffer	Liquid in 0.42% Potassium phosphate, 0.87% Sodium chloride, pH 7.3, 30% glycerol, and 0.01% sodium azide.
Alternative Names	C21orf106; DIP2; KIAA0184; Disco-interacting protein 2 homolog A; DIP2 homolog A
Gene Symbol	DIP2A
Entrez Gene	23181(Human)
SwissProt	Q14689(Human)

*AREX continuously optimizes our products. Webpage content may not reflect the latest updates. For inquiries, please contact info@arexbio.com or your local distributor.

*Clone Number, Reactivity, Source/Host and Clonality can be found in the product name and Key Features section above.

DATASHEET**DIP2A Rabbit Polyclonal Antibody**

CAT. NO. APA18833

DATA

Western blot analysis of DIP2A expression in HeLa (A) whole cell lysates. (Predicted band size: 170 kD; Observed band size: 200 kD)

STORAGE

Store at 4°C short term. For long term storage, store at -20°C, avoiding freeze/thaw cycles.

NOTE

For Research Use Only. Not for diagnostic, therapeutics, prophylactic or in vivo use.