

DATASHEET

CRISPLD2 Rabbit Polyclonal Antibody

CAT. NO. APA18839

KEY FEATURES

Target	CRISPLD2	Source / Host	Rabbit
Reactivity	Human	Clonality	Polyclonal
Applications	WB	Conjugation	Unconjugated
Form / Buffer	Liquid in 0.42% Potassium phosphate, 0.87% Sodium chloride, pH 7.3, 30% glycerol, and 0.01% sodium azide.		Storage at -20°C

BACKGROUND

Promotes matrix assembly.

APPLICATION

To ensure optimal assay performance, AREX recommends conducting reagent titration tailored to each testing system for optimal detection results.

WB	1:500 - 1:1000
----	----------------

*Results are sample-specific. Please refer to your local assay conditions and test parameters for reference.

PRODUCT OVERVIEW

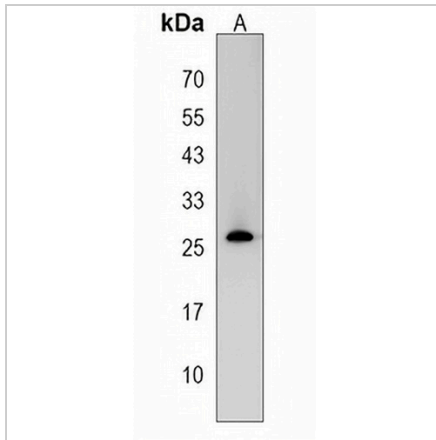
Description	Rabbit polyclonal antibody to CRISPLD2
Specificity	Recognizes endogenous levels of CRISPLD2 protein.
Antibody Type	Primary antibody
Immunogen	KLH-conjugated synthetic peptide encompassing a sequence within the N-terminal region of human CRISPLD2. The exact sequence is proprietary.
Purification	The antibody was purified by immunogen affinity chromatography.
Molecular Weight	Predicted: 55 kD; Observed: 26 kD
Form/Buffer	Liquid in 0.42% Potassium phosphate, 0.87% Sodium chloride, pH 7.3, 30% glycerol, and 0.01% sodium azide.
Alternative Names	CRISP11; LCRISP2; Cysteine-rich secretory protein LCCL domain-containing 2; Cysteine-rich secretory protein 11; CRISP-11; LCCL domain-containing cysteine-rich secretory protein 2
Gene Symbol	CRISPLD2
Entrez Gene	83716(Human)
SwissProt	Q9H0B8(Human)

*AREX continuously optimizes our products. Webpage content may not reflect the latest updates. For inquiries, please contact info@arexbio.com or your local distributor.

*Clone Number, Reactivity, Source/Host and Clonality can be found in the product name and Key Features section above.

DATASHEET**CRISPLD2 Rabbit Polyclonal Antibody**

CAT. NO. APA18839

DATA

Western blot analysis of CRISPLD2 expression in CEM (A) whole cell lysates. (Predicted band size: 55 kD; Observed band size: 26 kD)

STORAGE

Store at 4°C short term. For long term storage, store at -20°C, avoiding freeze/thaw cycles.

NOTE

For Research Use Only. Not for diagnostic, therapeutics, prophylactic or in vivo use.