

DATASHEET

DNAJC8 Rabbit Polyclonal Antibody

CAT. NO. APA18841

KEY FEATURES

Target	DNAJC8	Source / Host	Rabbit
Reactivity	Human, Mouse	Clonality	Polyclonal
Applications	WB	Conjugation	Unconjugated
Form / Buffer	Liquid in 0.42% Potassium phosphate, 0.87% Sodium chloride, pH 7.3, 30% glycerol, and 0.01% sodium azide.		Storage at -20°C

BACKGROUND

Suppresses polyglutamine (polyQ) aggregation of ATXN3 in neuronal cells aggregation of ATXN3 in neuronal cells .

APPLICATION

To ensure optimal assay performance, AREX recommends conducting reagent titration tailored to each testing system for optimal detection results.

WB	1:500 - 1:1000
----	----------------

*Results are sample-specific. Please refer to your local assay conditions and test parameters for reference.

PRODUCT OVERVIEW

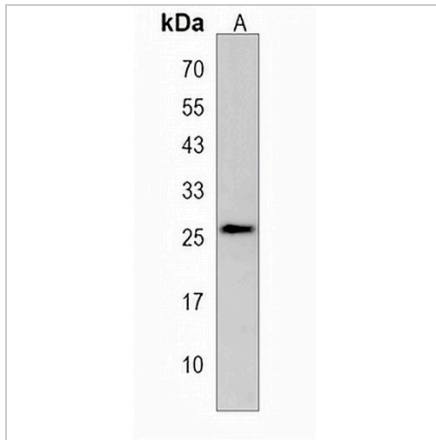
Description	Rabbit polyclonal antibody to DNAJC8
Specificity	Recognizes endogenous levels of DNAJC8 protein.
Antibody Type	Primary antibody
Immunogen	KLH-conjugated synthetic peptide encompassing a sequence within the C-terminal region of human DNAJC8. The exact sequence is proprietary.
Purification	The antibody was purified by immunogen affinity chromatography.
Molecular Weight	Predicted: 29 kD; Observed: 26 kD
Form/Buffer	Liquid in 0.42% Potassium phosphate, 0.87% Sodium chloride, pH 7.3, 30% glycerol, and 0.01% sodium azide.
Alternative Names	SPF31; Dnaj homolog subfamily C member 8; Splicing protein spf31
Gene Symbol	DNAJC8
Entrez Gene	22826(Human); 68598(Mouse)
SwissProt	O75937(Human); Q6NZZ0(Mouse)

*AREX continuously optimizes our products. Webpage content may not reflect the latest updates. For inquiries, please contact info@arexbio.com or your local distributor.

*Clone Number, Reactivity, Source/Host and Clonality can be found in the product name and Key Features section above.

DATASHEET**DNAJC8 Rabbit Polyclonal Antibody**

CAT. NO. APA18841

DATA

Western blot analysis of DNAJC8 expression in mouse lung (A) whole cell lysates.
(Predicted band size: 29 kD; Observed band size: 26 kD)

STORAGE

Store at 4°C short term. For long term storage, store at -20°C, avoiding freeze/thaw cycles.

NOTE

For Research Use Only. Not for diagnostic, therapeutics, prophylactic or in vivo use.