

DATASHEET

RBM24 Rabbit Polyclonal Antibody

CAT. NO. APA18843

KEY FEATURES

Target	RBM24	Source / Host	Rabbit
Reactivity	Human, Mouse	Clonality	Polyclonal
Applications	WB, IHC, FC	Conjugation	Unconjugated
Form / Buffer	Liquid in 0.42% Potassium phosphate, 0.87% Sodium chloride, pH 7.3, 30% glycerol, and 0.01% sodium azide.		Storage at -20°C

BACKGROUND

Multifunctional RNA-binding protein involved in the regulation of pre-mRNA splicing, mRNA stability and mRNA translation important for cell fate decision and differentiation . Plays a major role in pre-mRNA alternative splicing regulation . Mediates preferentially muscle-specific exon inclusion in numerous mRNAs important for striated cardiac and skeletal muscle cell differentiation . Binds to intronic splicing enhancer (ISE) composed of stretches of GU-rich motifs localized in flanking intron of exon that will be included by alternative splicing . Involved in embryonic stem cell (ESC) transition to cardiac cell differentiation by promoting pre-mRNA alternative splicing events of several pluripotency and/or differentiation genes . Plays a role in the regulation of mRNA stability .

APPLICATION

To ensure optimal assay performance, AREX recommends conducting reagent titration tailored to each testing system for optimal detection results.

WB	1:500 - 1:1000
IHC	1:50 - 1:200
FC	1:10 - 1:50

*Results are sample-specific. Please refer to your local assay conditions and test parameters for reference.

PRODUCT OVERVIEW

Description	Rabbit polyclonal antibody to RBM24
Specificity	Recognizes endogenous levels of RBM24 protein.
Antibody Type	Primary antibody
Immunogen	KLH-conjugated synthetic peptide encompassing a sequence within the N-terminal region of human RBM24. The exact sequence is proprietary.
Purification	The antibody was purified by immunogen affinity chromatography.
Molecular Weight	Predicted: 24 kD; Observed: 24 kD
Form/Buffer	Liquid in 0.42% Potassium phosphate, 0.87% Sodium chloride, pH 7.3, 30% glycerol, and 0.01% sodium azide.
Alternative Names	RNPC6; RNA-binding protein 24; RNA-binding motif protein 24; RNA-binding region-containing protein 6
Gene Symbol	RBM24
Entrez Gene	221662(Human); 666794(Mouse)
SwissProt	Q9BX46(Human); D3Z4I3(Mouse)

*AREX continuously optimizes our products. Webpage content may not reflect the latest updates. For inquiries, please contact info@arexbio.com or your local distributor.

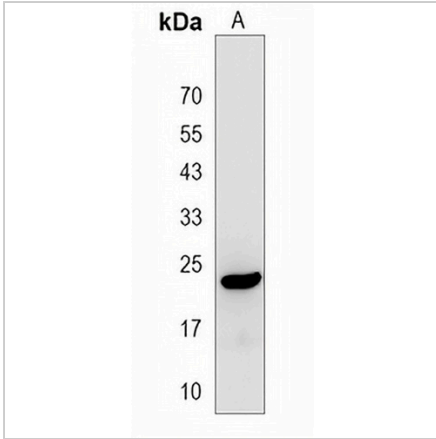
*Clone Number, Reactivity, Source/Host and Clonality can be found in the product name and Key Features section above.

DATASHEET

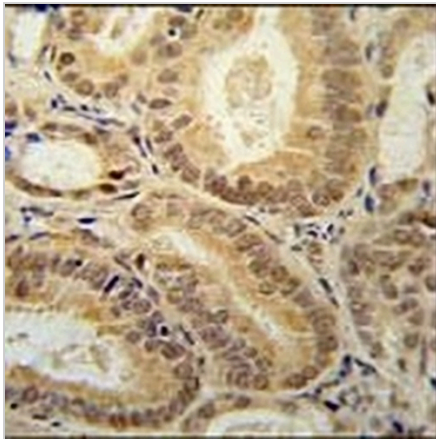
RBM24 Rabbit Polyclonal Antibody

CAT. NO. APA18843

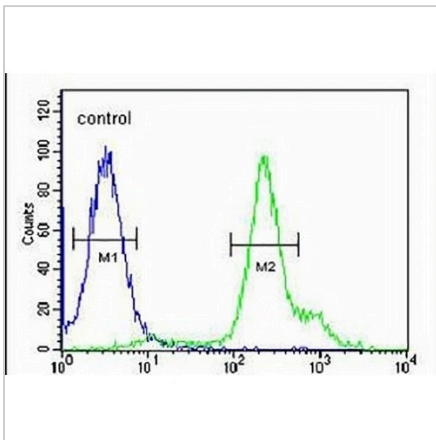
DATA



Western blot analysis of RBM24 expression in mouse heart (A) whole cell lysates. (Predicted band size: 24 kD; Observed band size: 24 kD)



Immunohistochemical analysis of RBM24 staining in human prostate carcinoma formalin fixed paraffin embedded tissue section. The section was pre-treated using heat mediated antigen retrieval with sodium citrate buffer (pH 6.0). The section was then incubated with the antibody at room temperature and detected using an HRP conjugated compact polymer system. DAB was used as the chromogen. The section was then counterstained with haematoxylin and mounted with DPX.



Flow cytometric analysis of 293 cells using Anti-RBM24 Antibody. The cells were fixed with 2% paraformaldehyde (10 min) and then permeabilized with 90% methanol for 10 min. The cells were incubated in 2% bovine serum albumin to block non-specific protein-protein interactions followed by the antibody at 37 °C for 60 min. The secondary antibody Goat Anti-Rabbit IgG (H&L) - AREX® Fluor 488 was incubated at 37 °C for 40 min. Isotype control antibody (blue line) was used under the same condition.

STORAGE

Store at 4°C short term. For long term storage, store at -20°C, avoiding freeze/thaw cycles.

NOTE

For Research Use Only. Not for diagnostic, therapeutics, prophylactic or in vivo use.