

## DATASHEET

# TRIM50 Rabbit Polyclonal Antibody

CAT. NO. APA18849

### KEY FEATURES

Target	TRIM50	Source / Host	Rabbit
Reactivity	Human	Clonality	Polyclonal
Applications	WB, IHC, FC	Conjugation	Unconjugated
Form / Buffer	Liquid in 0.42% Potassium phosphate, 0.87% Sodium chloride, pH 7.3, 30% glycerol, and 0.01% sodium azide.		Storage at -20°C

### BACKGROUND

E3 ubiquitin-protein ligase that ubiquitinates Beclin-1/BECN1 in a 'Lys-63'-dependent manner enhancing its binding to ULK1 . In turn, promotes starvation-induced autophagy activation. Also interacts with p62/SQSTM1 protein and thereby induces the formation and the autophagy clearance of aggresome-associated polyubiquitinated proteins through HDAC6 interaction . Also promotes NLRP3 inflammasome activation by directly inducing NLRP3 oligomerization independent of its E3 ligase function .

### APPLICATION

To ensure optimal assay performance, AREX recommends conducting reagent titration tailored to each testing system for optimal detection results.

WB	1:500 - 1:1000
IHC	1:50 - 1:200
FC	1:10 - 1:50

\*Results are sample-specific. Please refer to your local assay conditions and test parameters for reference.

### PRODUCT OVERVIEW

Description	Rabbit polyclonal antibody to TRIM50
Specificity	Recognizes endogenous levels of TRIM50 protein.
Antibody Type	Primary antibody
Immunogen	KLH-conjugated synthetic peptide encompassing a sequence within the C-terminal region of human TRIM50. The exact sequence is proprietary.
Purification	The antibody was purified by immunogen affinity chromatography.
Molecular Weight	Predicted: 54 kD; Observed: 57 kD
Form/Buffer	Liquid in 0.42% Potassium phosphate, 0.87% Sodium chloride, pH 7.3, 30% glycerol, and 0.01% sodium azide.
Alternative Names	TRIM50A; E3 ubiquitin-protein ligase TRIM50; Tripartite motif-containing protein 50
Gene Symbol	TRIM50
Entrez Gene	135892(Human)
SwissProt	Q86XT4(Human)

\*AREX continuously optimizes our products. Webpage content may not reflect the latest updates. For inquiries, please contact [info@arexbio.com](mailto:info@arexbio.com) or your local distributor.

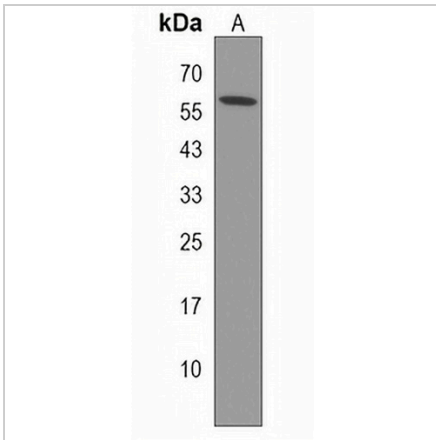
\*Clone Number, Reactivity, Source/Host and Clonality can be found in the product name and Key Features section above.

**DATASHEET**

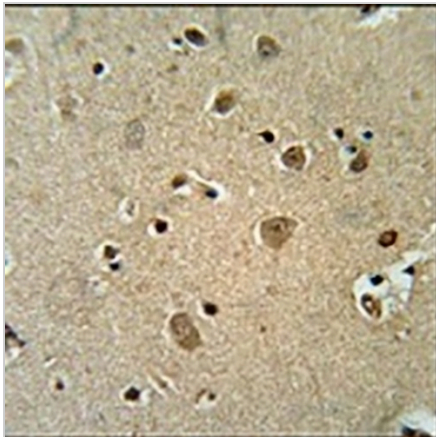
**TRIM50 Rabbit Polyclonal Antibody**

CAT. NO. APA18849

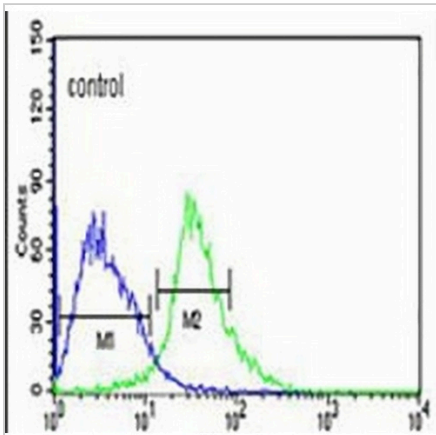
**DATA**



Western blot analysis of TRIM50 expression in Jurkat (A) whole cell lysates. (Predicted band size: 54 kD; Observed band size: 57 kD)



Immunohistochemical analysis of TRIM50 staining in human brain formalin fixed paraffin embedded tissue section. The section was pre-treated using heat mediated antigen retrieval with sodium citrate buffer (pH 6.0). The section was then incubated with the antibody at room temperature and detected using an HRP conjugated compact polymer system. DAB was used as the chromogen. The section was then counterstained with haematoxylin and mounted with DPX.



Flow cytometric analysis of Jurkat cells using Anti-TRIM50 Antibody. The cells were fixed with 2% paraformaldehyde (10 min) and then permeabilized with 90% methanol for 10 min. The cells were incubated in 2% bovine serum albumin to block non-specific protein-protein interactions followed by the antibody at 37 °C for 60 min. The secondary antibody Goat Anti-Rabbit IgG (H&L) - AREX® Fluor 488 was incubated at 37 °C for 40 min. Isotype control antibody (blue line) was used under the same condition.

**STORAGE**

Store at 4°C short term. For long term storage, store at -20°C, avoiding freeze/thaw cycles.

**NOTE**

For Research Use Only. Not for diagnostic, therapeutics, prophylactic or in vivo use.