

DATASHEET

ERI3 Rabbit Polyclonal Antibody

CAT. NO. APA18864

KEY FEATURES

Target	ERI3	Source / Host	Rabbit
Reactivity	Human, Hamster	Clonality	Polyclonal
Applications	WB, IHC	Conjugation	Unconjugated
Form / Buffer	Liquid in 0.42% Potassium phosphate, 0.87% Sodium chloride, pH 7.3, 30% glycerol, and 0.01% sodium azide.		Storage at -20°C

BACKGROUND

ERI1 exoribonuclease 3 (ERI3), also known as Prion interactor 1, Prion protein-interacting protein. Subunit: Interacts with PRNP

APPLICATION

To ensure optimal assay performance, AREX recommends conducting reagent titration tailored to each testing system for optimal detection results.

WB	1:500 - 1:1000
IHC	1:50 - 1:200

*Results are sample-specific. Please refer to your local assay conditions and test parameters for reference.

PRODUCT OVERVIEW

Description	Rabbit polyclonal antibody to ERI3
Specificity	Recognizes endogenous levels of ERI3 protein.
Antibody Type	Primary antibody
Immunogen	KLH-conjugated synthetic peptide encompassing a sequence within the C-terminal region of human ERI3. The exact sequence is proprietary.
Purification	The antibody was purified by immunogen affinity chromatography.
Molecular Weight	Predicted: 37 kD; Observed: 38 kD
Form/Buffer	Liquid in 0.42% Potassium phosphate, 0.87% Sodium chloride, pH 7.3, 30% glycerol, and 0.01% sodium azide.
Alternative Names	PINT1; PRNPIP; PRNPIP1; ERI1 exoribonuclease 3; Prion interactor 1; Prion protein-interacting protein
Gene Symbol	ERI3
Entrez Gene	79033(Human)
SwissProt	O43414(Human)

*AREX continuously optimizes our products. Webpage content may not reflect the latest updates. For inquiries, please contact info@arexbio.com or your local distributor.

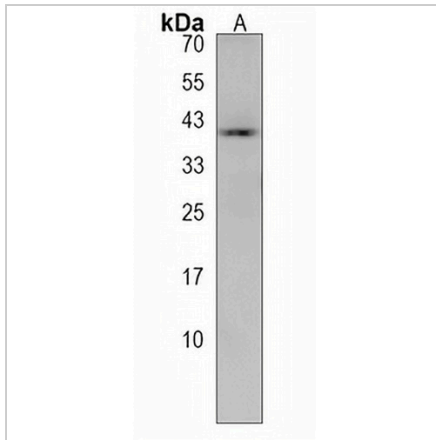
*Clone Number, Reactivity, Source/Host and Clonality can be found in the product name and Key Features section above.

DATASHEET

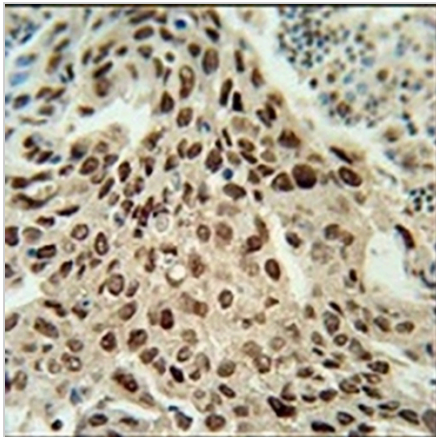
ERI3 Rabbit Polyclonal Antibody

CAT. NO. APA18864

DATA



Western blot analysis of ERI3 expression in CHO (A) whole cell lysates. (Predicted band size: 37 kD; Observed band size: 38 kD)



Immunohistochemical analysis of ERI3 staining in human lung carcinoma formalin fixed paraffin embedded tissue section. The section was pre-treated using heat mediated antigen retrieval with sodium citrate buffer (pH 6.0). The section was then incubated with the antibody at room temperature and detected using an HRP conjugated compact polymer system. DAB was used as the chromogen. The section was then counterstained with haematoxylin and mounted with DPX.

STORAGE

Store at 4°C short term. For long term storage, store at -20°C, avoiding freeze/thaw cycles.

NOTE

For Research Use Only. Not for diagnostic, therapeutics, prophylactic or in vivo use.